

Samsnite



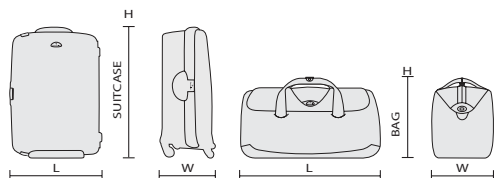
**CATALOGUE 2023**



# GENERAL INFO

## Measurements

The dimensions shown in the tables are the exterior dimensions (including handles, wheels, bottom glides, side pockets and other external parts).



Measurements of volume, dimensions and weight are carried out in the Samsonite laboratories using procedures whereby tolerances up to 1.5 cm in dimensions and 5 % in weight and volume cannot be excluded.

Samsonite reserves the right to amend the specifications, colours, dimensions and weight of any product without prior warning. Colour deviation may occur due to the printing technique used.

## Product Codes

All Samsonite product codes appear as follows: S'Cure Eco Spinner 55:

128014: MODEL CODE S'CURE ECO SPINNER 55

## Quality

We deliver the quality. You conduct the test. Every journey. Every day. You might not have given it any thought, but each Samsonite product undergoes the most stringent controls and tests before it goes on the market. Of course, the ultimate test is conducted by you, the customer.



TUMBLE TEST



HANDLE TEST



DROPT TEST



WHEEL TEST



ZIPPER TEST



LOCKS TEST

Discover our service after sales website:

Go to **supportandgo.com** to look up a service point, check lock instructions, learn more about the terms & conditions of the warranty, consult FAQ's and find information on parts & service.

Register your Samsonite online and receive exclusive offers, sneak previews, gift ideas, new product announcements and more on **my.samsonite.com**

## #MySamsonite



[www.samsonite.com](http://www.samsonite.com)



[instagram.com/mysamsonite](https://www.instagram.com/mysamsonite)



[facebook.com/samsoniteofficial](https://www.facebook.com/samsoniteofficial)



[pinterest.com/mysamsonite](https://www.pinterest.com/mysamsonite)



[youtube.com/samsoniteeurope](https://www.youtube.com/samsoniteeurope)



[twitter.com/mysamsonite](https://twitter.com/mysamsonite)



[linkedin.com/company/samsonite](https://www.linkedin.com/company/samsonite)



# HISTORY

## Milestones

Ever since its earliest days, Samsonite has been the most innovative luggage manufacturer in the world. It has led the industry in using new materials and creating new designs. Here are just a few of the luggage landmarks that Samsonite has created over the years, as part of its tradition of innovation.

**1910**



### **The Wooden Trunk**

Jesse Shwayder, the company's original founder, redesigns the basic wooden trunk with shiny metal studs and corner-pieces making it more eye-catching and "strong enough to stand on."

**1941**



### **Streamlite™**

In an early use of a new cutting-edge technology, the Streamlite suitcase is clad in a lightweight lithographed paper to create a "rawhide" effect. Its tapered shape is destined to become a classic within the industry.

**1958**



### **Silhouette™**

The most advanced luggage made up to that time, included a new modern shape with recessed hardware to protect it from the wear and tear of travel.

**1962**



### **Classic Attaché**

The first ABS Attaché case is created for a new generation of business men. This sleek case soon became emblematic for the early-60s Mad Men-style executive.

**1998**



### **Xylem™**

Introduction of the first Samsonite suitcase in aluminium. Its matching attaché would go on to play a key supporting role in the James Bond movie "The World Is Not Enough," where it was used to tote bundles of cash around Europe.

**2004**



### **Spinner®**

Samsonite markets the four-wheel Spinner, which could be steered in any direction and toted right alongside the traveller. This innovation radically improved mobility and convenience for travellers as they navigated their way through modern airports.

**2008**



### **Cosmolite®**

Samsonite launches Cosmolite as an answer to the market's increasing demand for stronger and lighter suitcases. It was the lightest and strongest Samsonite case yet developed. Its sea shell inspired design became an instant success and the collection went on to win many design awards, including Red Dot Award "Best of the Best."

**2015**



### **Neopulse™**

With the launch of Neopulse, Samsonite further strengthens its production capacity in Europe. The Made in Europe label, in combination with a strong design and competitive weight advantage are what made this collection an instant commercial success.

**1969****Saturn™**

As a response to the rising demand of lightweight luggage, Samsonite launches its first Polypropylene suitcase with injection-moulded shells. The Saturn collection was the niftiest iteration of lightness and strength yet.

**1974****Silhouette Blue**

The introduction of wheels to the Silhouette frame transformed the luggage world for ever. The case was a true revolution in travel comfort and convenience, targetting a new generation of frequent flyers.

**1986****Oyster™**

Oyster was the first suitcase with a three-point locking system, providing ultimate strength and security. The case was an immediate triumph, with 140.000 bought in its first year, it was the fastest-selling case of all time.

**1994****Ziplite™**

With Ziplite, Samsonite introduced its first Polypropylene suitcase with a zipper closure, thus combining both the benefits of hardside and softside luggage. Sales took off quickly and the market for hardside suitcases with zippers was born.

**2018****Eco Collection**

Worldwide, Samsonite launches 23 product lines that are made from recycled Polypropylene or Recyclex™, a fabric made from 100% post-consumer recycled PET plastic bottles.

**2019****S'Cure Eco post consumer-waste**

S'Cure Eco is the first suitcase on the planet repurposing post-consumer recycled plastic waste. The suitcase's shells are made using recycled Polypropylene from post-consumer household waste, turning a material too valuable to be thrown away into a high-quality functional product.

**2020****110 Year Anniversary**

Ready for the next chapter: we celebrate our 110 year anniversary with brand new novelty collections.

# CONTENTS

HARDSIDE SELECTION			6	SOFTSIDE SELECTION			54
Lite-Box Alu		A111	8	Spectrolite 3.0 TRVL		B670	56
Lite-Box		7114	10	D'Lite		B739	58
Major-Lite	<b>N</b>	D163	12	Respark		C528	60
C-Lite		A154	14	Vaycay	<b>N</b>	C979	64
C-Lite		A154	16	Litebeam	<b>N</b>	D125	66
C-lite Disney		B555	18				
Proxis		A515	20	SOFTSIDE DEALER			68
Attrix	<b>N</b>	D027	22	Airea		B359	70
Neopod		C039	24	Base Boost		7104	72
Nuon		B434	26	Citybeat		A760	74
Ibon		B432	28				
Upscape		C491	30	CASUAL SELECTION			76
StackD		B435	32	Ecodiver		C192	78
StackD Disney		C737	34				
Magnum Eco		C024	36	CASUAL DEALER			82
Essens	<b>N</b>	D140	38	Midtown		5339	84
				Roader		C520	86
HARDSIDE DEALER			40	BUSINESS & BAGS SELECTION			90
Lite-Cube DLX		2837	42	PRO-DLX 6	<b>N</b>	D236	92
Lite-Cube		2434	44	Spectrolite 3.0		B656	96
Lite-Shock		3160	46	Biz2Go		C376	98
S'Cure Eco		9477	48	XBR 2.0	<b>N</b>	D109	100
S'Cure Eco		9477	50	Securipak		A745	102
S'Cure		1103	52	Securipak S		A844	104
				Zalia 3.0	<b>N</b>	D327	106

## BUSINESS & BAGS DEALER 108

Openroad 2.0	B650	110
Vectura EVO	A202	112
StackD Biz	C294	114
Litepoint	B441	116
Mysight	B514	118
Dye-Namic	<b>N</b> D105	120
Guardit 2.0	9458	122
Network 4	C410	124
Sacksquare	<b>N</b> D106	126
Sackmod	<b>N</b> D104	128
Airglow Sleeves	5405	131
Openroad Chic 2.0	B997	132
Be-Her	C811	134
Workationist	C431	136
Eco Wave	A884	138
Ongoing	C815	140
Guardit Classy	B999	142
Move 4.0	C813	144

## KIDS & LICENSES 146

Dream2Go	<b>N</b> C872	148
Dream2Go Disney	<b>N</b> C875	150
Happy Sammies Eco	B100	152
Happy Sammies	8241	156
MARVEL Ultimate 2.0 - Spider-Man	8744	158
Disney Ultimate 2.0 - Minnie Glitter	8744	159
Disney Ultimate 2.0 - Mickey and Donald Stars	8744	160
Disney Ultimate 2.0 - Cars	<b>N</b> 8744	161
Disney Ultimate 2.0 - Frozen	8744	162

## UMBRELLAS 164

Alu Drop S	9061	166
Rain Pro	1999	168
Wood Classic S	9063	170

## ACCESSOIRES 172

Pack-sized	D135	174
GLOBAL TRAVEL ACCESSORIES		
Luggage Accessories	9467	176
Packing Accessories	9467	178
Comfort Travelling	9467	180
Electronic Accessories	9467	182

## TOILET KITS 183

C-Lite Toilet Kit	C428	184
Respark Toilet Kit	D008	186
StackD Toilet Kit	C430	188

## LEATHER GOODS 190

Alu Fit	A865	192
PRO-DLX 6 SLG	C823	194
Flagged SLG	C043	198
Veggy SLG	C824	200
Attack 2 SLG	A246	202

## OVERVIEW 206

## GENERAL INFO 214

<b>LITE-BOX ALU</b>		<b>8</b>
<b>LITE-BOX</b>		<b>10</b>
<b>MAJOR-LITE</b>	<b>NEW</b>	<b>12</b>
<b>C-LITE</b>		<b>14</b>
<b>C-LITE</b>		<b>16</b>
<b>C-LITE DISNEY</b>		<b>18</b>
<b>PROXIS</b>		<b>20</b>
<b>ATTRIX</b>	<b>NEW</b>	<b>22</b>
<b>NEOPOD</b>		<b>24</b>
<b>NUON</b>		<b>26</b>
<b>IBON</b>		<b>28</b>
<b>UPSCAPE</b>		<b>30</b>
<b>STACKD</b>		<b>32</b>
<b>STACKD DISNEY</b>		<b>34</b>
<b>MAGNUM ECO</b>		<b>36</b>
<b>ESSENS</b>	<b>NEW</b>	<b>38</b>



A minimalist, modern interior scene. In the foreground, a white, curved, glossy surface holds a green cylindrical object and a spherical object. The sphere is split diagonally, with the top half being green and the bottom half being white. In the background, a light gray wall is visible, and a thin, curved white line runs diagonally across it. The word "Selection" is written in a white, cursive font in the top right corner.

# LITE-BOX ALU™

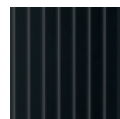
A111

Style and performance reach new heights thanks to Lite-Box Alu's robust, yet refined aluminium shells and superior features.

- Premium-quality anodised aluminium
- Each dent or scratch tells your unique travel experience
- Spacious interior with small pockets, packing straps and floating divider pads to compress your belongings carefully



Aluminium  
1004



Black  
1041



**NEW**

Gradient Midnight Blue  
A016

LIMITED  
**10**  
year  
WARRANTY



Samsonite-branded locks with integrated TSA\* function



Emboss your initials on the personalisation tag



Smooth-rolling double wheels with ball bearing reduce noise





Samsonite Lite-B...



*Selection*

HARDSIDE



122705

### Spinner 55



40 x 55 x 23



40 l



4.7 kg



122706

### Spinner 69



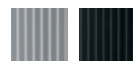
47 x 69 x 27



71 l



5.9 kg



122707

### Spinner 76



51 x 76 x 28



91 l



6.6 kg



132693

### Trunk 74



41 x 74 x 37



93 l



6.5 kg



132694

### Trunk 80



41 x 80 x 37



106 l



6.8 kg



The contemporary boxy Lite-Box design with corner protections will surpass your expectations on lightness and strength.

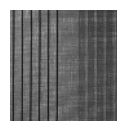
- Made with CURV® material\*: extremely strong, incredibly light
- Made in Europe
- Voluminous and boxy design
- Silver detailing
- Both compartments have a divider pad in premium lining and removable cross ribbons



Black  
1041



Deep Blue  
1277



Eclipse Grey  
2957



LIMITED  
10 year  
WARRANTY



Eye-catching corners add strength in the right places



Double tube pull handle (elongated on check-in sizes)



Smooth-rolling double wheels enable optimum manoeuvrability





Selection

HARDSIDE



79297

Spinner 55

	40 x 55 x 20
	38 l
	2.2 kg
<b>abc</b>	



79299

Spinner 69

	46 x 69 x 27
	75 l
	2.8 kg
<b>abc</b>	



79300

Spinner 75

	50 x 75 x 29
	98 l
	3.1 kg
<b>abc</b>	



79301

Spinner 81

	53 x 81 x 31
	124 l
	3.5 kg
<b>abc</b>	

Designed to perfection, Major-Lite exceeds expectations in terms of design, lightness, and strength. The CURV® woven technology combined with self-reinforced design and top-notch features guarantee an incredible travel experience.

- Made with CURV® material: Extremely strong, incredibly light
- Made in Europe
- Outstanding design and detailing
- Interior lining made from post-consumer recycled PET plastic bottles (Recyclex™)
- Practical packing thanks to a fixed divider pad, a removable divider pad with a large pocket and packing straps



Black  
1041



Midnight Blue  
1549



Saffron Yellow  
2048



Climbing Ivy  
9199



LIMITED  
10 year  
WARRANTY



RECYCLEX™

Emboss your initials on the personalisation tag



Double tube pull handle, elongated on check-ins, with integrated ID tag



Suspension wheels reducing noise and vibrations





147117






### Spinner 55 EXP

	40 x 55 x 20/23
	37/43 l
	2.2 kg
       	



147119








### Spinner 69

	45 x 69 x 28
	69 l
	2.8 kg
       	



147120

### Spinner 77

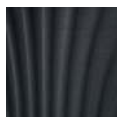
	50 x 77 x 31
	100 l
	3.0 kg
       	

The iconic design of C-Lite guarantees incredible lightness and top-notch comfort, taking your travel experience to the next level.

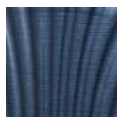
- Made with CURV® material: extremely strong, incredibly light
- Made in Europe
- Interior lining made out of Recyclax™, a textile engineered from post-consumer recycled PET plastic bottles
- Wide range of sizes including Spinner 55 EXP and Spinner 86



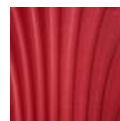
Off White  
1627



Black  
1041



Midnight Blue  
1549



Chili Red  
1198



Deep Blue  
1277



Metallic Green  
1542

## MATCHES

C-LITE TOILET KIT P. 184

LIMITED  
10 year  
WARRANTY



RECYCLEX™



Silent and smooth-rolling double wheels



Integrated USB port on cabins, incl. power bank pouch in the interior



Double tube pull handle, elongated on check-ins, with integrated ID tag



reddot design award  
best of the best 2010

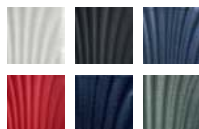


Samsonite C-Lite - ...



Selection

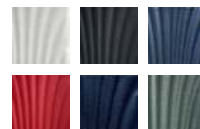
HARDSIDE



122859

### Spinner 55

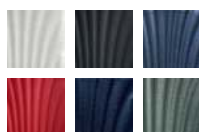
	40 x 55 x 20
	36 l
	1.9 kg
<b>abc</b>	



134679

### Spinner 55 EXP

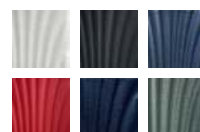
	40 x 55 x 20/23
	36/42 l
	2.1 kg
<b>abc</b>	



122860

### Spinner 69

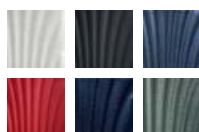
	46 x 69 x 29
	68 l
	2.5 kg
<b>abc</b>	



122861

### Spinner 75

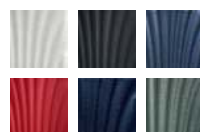
	51 x 75 x 31
	94 l
	2.8 kg
<b>abc</b>	



122862

### Spinner 81

	55 x 81 x 34
	123 l
	3.1 kg
<b>abc</b>	



122863

### Spinner 86

	58 x 86 x 36
	144 l
	3.6 kg
<b>abc</b>	

The iconic design of C-Lite guarantees incredible lightness and top-notch comfort, taking your travel experience to the next level.

- Made with CURV® material: extremely strong, incredibly light
- Made in Europe
- Interior lining made out of Recyclex™, a textile engineered from post-consumer recycled PET plastic bottles



**NEW**

Pearl/Fuchsia  
A021

LIMITED  
**10**  
year  
WARRANTY



RECYCLEX™



Silent and smooth-rolling double wheels



Integrated USB port on cabin size, incl. power bank pouch in the interior



Double tube pull handle, elongated on check-ins, with integrated ID tag



reddot design award  
best of the best 2010



141368

**Spinner 55 EXP LTD**



40 x 55 x 20/23



36/42 l



2.1 kg

TSA abc



141369

**Spinner 69 LTD**



46 x 69 x 29



68 l



2.5 kg

TSA abc



141370

**Spinner 75 LTD**



51 x 75 x 31



94 l



2.8 kg

TSA abc

Set off on magical new adventures together with Mickey Mouse. Whimsical and well-engineered, C-Lite Disney is the perfect partner to travel and dream.

- Made with CURV® material: Extremely strong, incredibly light
- Made in Europe
- Interior lining made from post-consumer recycled PET plastic bottles (Recyclex™)
- Magical Mickey Mouse print on the exterior and too cute to miss details on the interior



**NEW**

Mickey Mouse on the move  
A203

**Disney**

© Disney

LIMITED  
10 year  
WARRANTY



RECYCLEX™



reddot design award  
best of the best 2010

Silent and smooth-rolling double wheels



Integrated USB port on cabin size, incl. power bank pouch in the interior



Double tube pull handle, elongated on check-ins, with integrated ID tag





144379

### Spinner 55 EXP Disney

	40 x 55 x 20/23
	36/42 l
	2.1 kg



135802

### Spinner 69 Disney

	46 x 69 x 29
	68 l
	2.5 kg



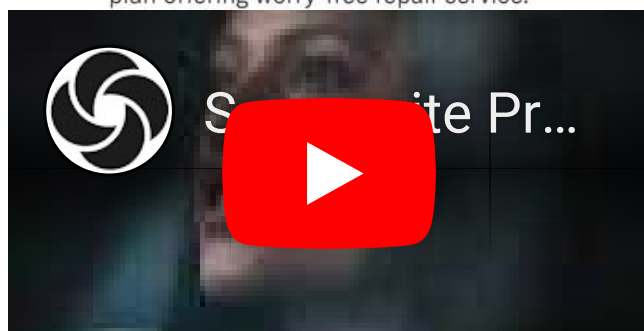
135803

### Spinner 75 Disney

	51 x 75 x 31
	94 l
	2.8 kg

Unlock a new era of high-performance travelling with Proxis. Innovative design, built to last and fully equipped, for a resilient future.

- Made in Europe
- Made from Roxkin™ material, an innovative multi-layered material highly resilient to shocks, offering remarkable strength and lightness
- Includes Samsonite wecare, a unique service plan offering worry-free repair service.



Silver  
1776



Petrol Blue  
1686



Black  
1041



Honey Gold  
6856



Matt Climbing Ivy  
9781



Matt Graphite  
4804



Lime  
1515

LIMITED  
10 year  
WARRANTY



Samsonite  
wecare



Integrated USB port and  
expandability on cabin sizes



Emboss your initials on the  
personalisation tag



Double tube pull handle, elongated on  
check-in sizes, with integrated ID tag





## Selection

Figure 1 displays seven color calibration charts, labeled A through G, arranged in two rows. The top row contains charts A, B, C, and D. The bottom row contains charts E, F, and G. Each chart consists of a grid of color patches. Chart A is a grayscale step wedge. Chart B is a color calibration chart with various color patches. Chart C is a color calibration chart with various color patches. Chart D is a color calibration chart with various color patches. Chart E is a color calibration chart with various color patches. Chart F is a color calibration chart with various color patches. Chart G is a color calibration chart with various color patches.



## Spinner 55 EXP

	40 x 55 x 20/23
	38/44 l
	2.2 kg



**Spinner 55 EXP**  
**Length 35 cm**

	35 x 55 x 23/26
	38/44 l
	2.1 kg



### Spinner 69

	48 x 69 x 29
	75 l
	2.7 kg



## Spinner 75

	51 x 75 x 31
	98 l
	2.9 kg



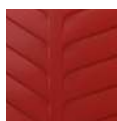
### Spinner 81

	57 x 81 x 32
	125 l
	3.5 kg

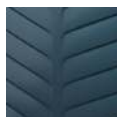


Built to go the distance, Attrib offers remarkable shock resistance, lightness and travel comfort thanks to the innovative Roxkin™ material, durable features and unique service plan. Designed, engineered and made in Europe.

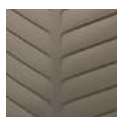
- Made in Europe
- Made from Roxkin™, an innovative multi-layered material highly resilient to shocks, offering remarkable strength and lightness
- Includes Samsonite wecare, a unique service plan offering worry-free repair service. Discover more on our wecare page
- Interior lining made from post-consumer recycled PET plastic bottles (Recyclex™)



Red  
1726



Steel Blue  
1827



Dune  
1304



Basil Green  
A204



Anthracite  
1009



Suspension wheels reducing noise and vibrations

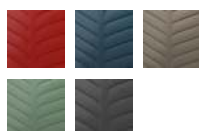


Double tube pull handle, with integrated ID tag



Featured interior with divider pad, pockets and lowered cross ribbons





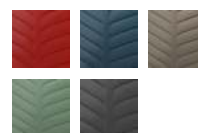
146116

### Spinner 55 EXP

40 x 55 x 20/23

Est. 38/44 l

Est. 2.0 kg



146117

### Spinner 55 EXP Length 35 cm

35 x 55 x 23/26

Est. 38/44 l

Est. 1.9 kg



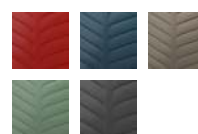
146118

### Spinner 69

45 x 69 x 27

Est. 71 l

Est. 2.5 kg



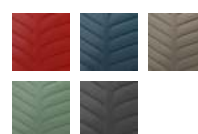
146119

### Spinner 75

52 x 75 x 30

Est. 96 l

Est. 2.7 kg



146120

### Spinner 81

55 x 81 x 33

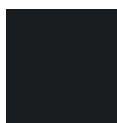
Est. 124 l

Est. 3.3 kg



Travel with ease and in style with Neopod. Each cabin luggage is designed to perfection while offering unique and smart easy access solutions surpassing your needs in our fast-paced world.

- Made from premium, lightweight Polycarbonate with scratch resistant finishing, premium PU and recycled PET fabric
- Hidden expandability
- TSA008 lock for extra security, closing each compartment separately
- Practical packing thanks to divider pads, multiple pockets including wet pocket and packing straps
- Removable and hand-washable interior lining



Black  
1041



Midnight Blue  
1549



Camo Black  
5046



**NEW**

Sage Green  
2017

LIMITED  
5 year  
WARRANTY



RECYCLEX™



Easy access front pocket for all your essentials like laptop, tablet, ...



Slide out pouch with multiple pockets and integrated USB A & C port



Suspension wheels reduce noise and vibrations





Samsonite Neopo...



*Selection*

HARDSIDE



139874

### Spinner 55 EXP Easy Access

	40 x 55 x 23/27
	41/48 l
	3.3 kg
	26.7 cm/10.5" - 26.6 x 18.3 x 1.5 cm
	39.6 cm/15.6" - 37.5 x 25.9 x 2.8 cm



139872

### Spinner 55 EXP Slide Out Pouch

	40 x 55 x 20/23
	38/44 l
	2.8 kg



## Nuon, designed for perfection and formed for functionality.

- Contemporary, boxy design with distinctive detailing
- Made from premium-quality, lightweight Polycarbonate (only 3.6 kg for Spinner 75 cm)
- High packing capacity and expandability of 3 cm (hidden expansion on cabin, regular on check in models)
- Practical packing thanks to the divider pad, removable divider pad with large pocket and compression straps. Extra pocket for power bank on the cabin
- Removable and hand-washable interior lining
- Interior lining made from post-consumer recycled PET plastic bottles (Recyclex™)



Metallic Red  
1544



Matt Silver  
4052



Matt Graphite  
4804



Metallic Dark Blue  
9015



**NEW**

Matt Powder Pink  
A017



**NEW**

Metallic Ocean Blue  
A018

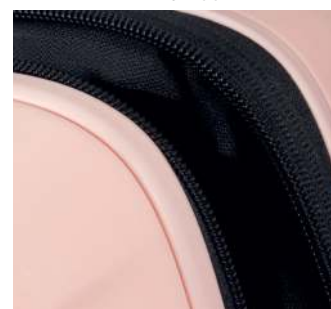
LIMITED  
**5**  
year  
WARRANTY



RECYCLEX™



Anti-theft security zipper



TSA008 lock for extra security, with integrated USB A & C port on cabin



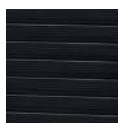
Suspension wheels reduce noise and vibrations





Ibon, the perfect blend between innovation and outstanding design, sets new standards thanks to the one-point lock opening, multiple carry handles and innovative interior.

- Made from Polypropylene with scratch resistant textures: strong and robust
- Multiple carry handles to ensure optimal ergonomics
- Practical and compressible interior. Small packing footprint fitting tiny spaces
- Interior lining made from post-consumer recycled PET plastic bottles (Recyclex™)



Black  
1041



Dark Blue  
1247



Off White  
1627



Yellow  
1924

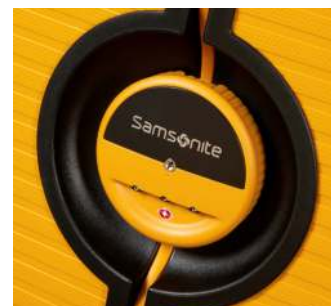
LIMITED  
5 year  
WARRANTY



RECYCLEX™



Secure one-point closing lock with integrated TSA function



Suspension wheels reduce noise and vibrations



Interior with click and compress divider system and carry handle





*Selection*

HARDSIDE



134382  
**Spinner 76**

	50 x 76 x 32
	102 l
	4.9 kg

Meet Upscape, a lightweight statement designed for you. Enjoy carefree travel thanks to expandability, suspension wheels and a featured and hand-washable interior.

- Made from robust & scratch resistant Polypropylene
- Ultra light: only 3.4 kg for Spinner 75 EXP
- TSA008 lock for extra security, with integrated USB A & C port on cabin
- Practical packing thanks to divider pad with 2 pockets and compression packing straps
- Double tube pull handle with integrated ID tag
- Interior lining made from post-consumer recycled PET plastic bottles (Recyclex™)



Black  
1041



Blue Nights  
2165



Yellow  
1924



Climbing Ivy  
9199



**NEW**

Petrol Blue  
1686



**NEW**

Tangerine Orange  
7976

LIMITED  
5 year  
WARRANTY



RECYCLEX™



Removable and hand-washable interior lining



Suspension wheels reduce noise and vibrations



Expandability, up to 12L extra volume





*Selection*

HARDSIDE



143108

### Spinner 55 EXP

	40 x 55 x 20/23
	39/45 l
	2.3 kg



143109

### Spinner 68 EXP

	47 x 68 x 28/31
	75/83 l
	3.0 kg



143110

### Spinner 75 EXP

	51 x 75 x 30/33
	104/114 l
	3.4 kg



143111

### Spinner 81 EXP

	54 x 81 x 34/37
	133/145 l
	3.9 kg

StackD, designed for the modern traveller and engineered to make journeys effortless thanks to high-quality materials and components.

- Made of durable Polycarbonate
- Hidden expandability on cabins
- Matte shells with high scratch resistance
- Practical, modern interior includes divider pad, compression straps and pockets
- Interior lining made from post-consumer recycled PET plastic bottles (Recyclex™)



Rose  
1751



Forest  
1338



Navy  
1596



Black  
1041



**NEW**

Lavender  
1491



**NEW**

Sand  
1775

## MATCHES

STACKD BIZ P. 114 AND STACKD TOILET KIT P. 188

LIMITED  
5 year  
WARRANTY



RECYCLEX™



Integrated USB port on cabin sizes, incl. power bank pouch in the interior



Integrated hook for personal belongings



Easy-access cabin includes laptop and tablet compartment





Samsonite Stack...



*Selection*

HARDSIDE

NEW



146986

### Beauty Case

35 x 25 x 23

14 l

0.8 kg



134638

### Spinner 55 EXP

40 x 55 x 20/23

35/42 l

2.8 kg



135418

### Spinner 55 EXP Easy Access

40 x 55 x 23/26

39/46 l

3.1 kg

26.7 cm/10.5" - 26.6 x 18.3 x 1.5 cm

39.6 cm/15.6" - 37.5 x 25.9 x 2.8 cm



134639

### Spinner 68

46 x 68 x 28

71 l

3.7 kg



134640

### Spinner 75

50 x 75 x 30

96 l

4.3 kg



134641

### Spinner 81

54 x 81 x 33

126 l

4.9 kg

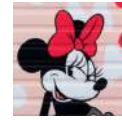


Stand out with Stackd Disney thanks to the head-turning designs, high-quality materials and great features. Adventure guaranteed!

- Made of durable Polycarbonate
- Hidden expandability
- Matte shell with high scratch resistance
- Practical, modern interior includes divider pad, compression straps and pockets
- Double tube pull handle with integrated ID tag
- Interior lining made from post-consumer recycled PET plastic bottles (Recyclex™)

Disney  
© Disney

MARVEL®  
© MARVEL



Minnie Bow  
5424



Black Panther  
A020



**NEW**  
Marvel Comics  
4528

LIMITED  
5 year  
WARRANTY



RECYCLEX™



Integrated USB port incl. power bank pouch in the interior



Integrated hook for personal belongings



Beautiful detailing on exterior and interior





144132

**Spinner 55 EXP Disney**



40 x 55 x 20/23



35/42 l



2.8 kg



146191

**Spinner 55 EXP Marvel**



40 x 55 x 20/23



35/42 l



2.8 kg



NEW



146191

**Spinner 55 EXP Marvel**



40 x 55 x 20/23



35/42 l



2.8 kg



Our responsible journey in the spotlight! Magnum Eco reduces waste while offering top notch security, lightness and high packing capacity.

- Made in Europe
- Shells made from at least 70% post-consumer recycled Polypropylene waste
- Interior lining made from post-consumer recycled PET plastic bottles (Recyclex™)
- Extraordinary light and high packing capacity: only 4.2kg for Spinner 75



Maple Orange  
0557



Forest Green  
1339



Graphite  
1374



Ice Blue  
1432



Midnight Blue  
1549



**NEW**

Radiant Orange  
0595



**NEW**

Summer Blue  
4497

LIMITED  
**5**  
year  
WARRANTY



RECYCLEX™



Secure and easy to use 3-point locking system with integrated TSA lock



Practical interior with two height adjustable divider pads and pocket



Perfect component integration: double wheels, ID tag, ...












*Selection*

HARDSIDE



139845







**Spinner 55**

	40 x 55 x 20
	38 l
	2.6 kg
    <b>abc</b>	



139846








**Spinner 69**

	48 x 69 x 30
	82 l
	3.8 kg
    <b>abc</b>	



139847


**Spinner 75**

	51 x 75 x 32
	104 l
	4.2 kg
    <b>abc</b>	



139848

**Spinner 81**

	55 x 81 x 36
	139 l
	4.6 kg
    <b>abc</b>	

Discover Essens. The secure travel companion, made from recycled materials, offers an immense packing capacity and a new and unique packing system. Ready for a carefree and lightweight trip!

- Made in Europe
- Immensely lightweight with a high packing capacity: only est. 4.2 kg for the Spinner 75
- Made out of recycled materials (Recyclex™)
  - Shells made from at least 70% post-consumer recycled Polypropylene waste
  - Interior lining made from post-consumer recycled PET plastic bottles
- Self-repair friendly
- 3 in 1 packing solution interior system: Two voluminous packing cubes which are removable, hand-washable and easy to lift and carry thanks to carry handles on either side



Graphite  
1374



Midnight Blue  
1549



Radiant Yellow  
4702



Alpine Green  
4705



Warm Neutral  
9559



Hibiscus Red  
A011

LIMITED  
5 year  
WARRANTY



RECYCLEX™

Secure and easy to use 3 point locking system with integrated TSA008 lock



Make it yours with uniquely designed stickers



Suspension wheels reducing noise and vibrations





146909

### Spinner 55

	40 x 55 x 20
	Est. 39 l
	Est. 2.6 kg



146911

### Spinner 69

	49 x 69 x 30
	Est. 88 l
	Est. 3.7 kg



146912

### Spinner 75

	52 x 75 x 33
	Est. 111 l
	Est. 4.2 kg

<b>LITE-CUBE DLX</b>	<b>42</b>
<b>LITE-CUBE</b>	<b>44</b>
<b>LITE-SHOCK</b>	<b>46</b>
<b>S'CURE ECO</b>	<b>48</b>
<b>S'CURE ECO</b>	<b>50</b>
<b>S'CURE</b>	<b>52</b>



# HARDSIDE

# LITE-CUBE DLX™

2837

A first-class travel experience thanks to the premium leather details and superior features of the Lite-Cube DLX.

- Made with CURV® material: extremely strong, incredibly light
- Made in Europe
- Fully-featured interior including floating divider, laundry bag, the cabin size has an extra removable wet pocket



Aluminium  
1004



Midnight Blue  
1549

LIMITED  
10 year  
WARRANTY



Leather soft touch handles and details



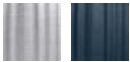
Unique metallised finishing on the Aluminium colour



Ultra silent, smooth-rolling wheels



reddot award 2016  
winner



61242

Spinner 55

	40 x 55 x 20
	36.5 l
	2.3 kg
abc	



61243

Spinner 68

	45 x 68 x 28.5
	67.5 l
	2.9 kg
abc	



61244

Spinner 76

	50 x 76 x 32
	96 l
	3.2 kg
abc	



61245

Spinner 82

	54.5 x 82 x 34.5
	122 l
	3.6 kg
abc	

Lite-Cube combines timeless style and lightness with contemporary comfort.

- Made with CURV® material: extremely strong, incredibly light
- Made in Europe



Ivory Gold  
1173



Graphite  
1374



Double wheels for optimum manoeuvrability



Soft touch double tube wheel handle with integrated ID tag



Highly featured interior, made of premium lining





58622

Spinner 55

	40 x 55 x 20
	36.5 l
	2.2 kg

TSA abc

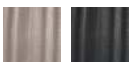


58623

Spinner 68

	45 x 68 x 28.5
	67.5 l
	2.8 kg

TSA abc



58624

Spinner 76

	50 x 76 x 32
	96 l
	3.1 kg

TSA abc



58625

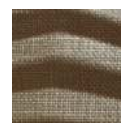
Spinner 82

	54.5 x 82 x 34.5
	122 l
	3.5 kg

TSA abc

Pushing the limits of innovation, Lite-Shock is our lightest hardside with maximum impact resistance.

- Made with CURV® material: extremely strong, incredibly light
- Made in Europe
- Lightweight and shock-absorbing shell design: only 2.5 kg for Spinner 75
- Functional, lightweight interior



Sand  
1775



Petrol Blue  
1686



Black  
1041

LIMITED  
10 year  
WARRANTY



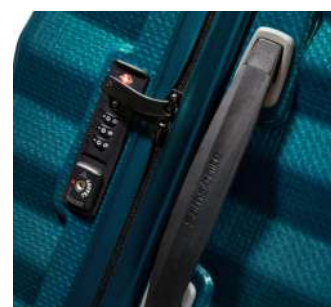
Shock-absorbing corners give extra strength



Single tube wheel handle with integrated ID tag



Innovative one-slot lock to secure your belongings



reddot design award  
winner 2015



62764

**Spinner 55**

 40 x 55 x 20

 36 l

 1.7 kg


     **abc**



62765

**Spinner 69**

 47 x 69 x 29

 73 l

 2.3 kg

     **abc**



62766

**Spinner 75**

 51.5 x 75 x 31

 98.5 l

 2.5 kg

     **abc**



62767

**Spinner 81**

 55 x 81 x 33

 124 l

 2.8 kg

     **abc**

**S'Cure Eco, the first collection made out of circular Polypropylene created from post-consumer waste. Sustainable yet stylish!**

- Made in Europe
- Constructed out of high-quality recycled materials
- Shells made from at least 70% post-consumer recycled Polypropylene waste
- Interior lining made from post-consumer recycled PET plastic bottles (Recyclex™)



Navy Blue  
1598



Forest Grey  
5587

LIMITED  
5 year  
WARRANTY



RECYCLEX™



Double tube pull handle and double wheels for optimal comfort



Secure and easy to use 3-point locking system






Seal to limit moisture penetration








128014  
**Spinner 55**  
**Post Consumer**

	40 x 55 x 20
	34 l
	2.9 kg






128015  
**Spinner 69**  
**Post Consumer**

	49 x 69 x 29
	79 l
	4.2 kg






128016  
**Spinner 75**  
**Post Consumer**

	52 x 75 x 31
	102 l
	4.6 kg



135147  
**Spinner 81**  
**Post Consumer**

	55 x 81 x 35
	138 l
	5.0 kg



The S'Cure Eco fits perfectly within Samsonite's philosophy to reduce and recycle waste whilst creating secure and robust products.

- Made in Europe
- Shells constructed out of a minimum of 85 % recycled Polypropylene (waste from Samsonite's own production process)
- Interior lining made from post-consumer recycled PET plastic bottles (Recyclex™)



Eco Black  
L470

LIMITED  
5 year  
WARRANTY



RECYCLEX™



Logo and ID tag enriched with recycled wood waste



Top carry handle with recycled wood fibre, except on the cabin



3-point locking closure provides extra security





115722  
**Spinner 55**

	40 x 55 x 20
	34 l
	2.9 kg



115723  
**Spinner 69**

	49 x 69 x 29
	79 l
	4.2 kg



115724  
**Spinner 75**

	52 x 75 x 31
	102 l
	4.6 kg



115725  
**Spinner 81**

	55 x 81 x 35
	138 l
	5.0 kg



Lightweight, robust and secure 3-point locking. S'Cure is the perfect reliable travel companion.

- Made in Europe
- Lightweight and robust Polypropylene
- 3-point locking for extra security
- Seal to limit moisture penetration
- Practical interior including covered cross ribbons, zipped divider pad and large side pocket



Silver  
1776



Dark Blue  
1247



Crimson Red  
1235



Black  
1041



Aqua Blue  
1012



**NEW**

Lime  
1515



**NEW**

Petrol Blue  
1686

LIMITED  
5 year  
WARRANTY



Made with  
**flowlite®**



Secure 3-point locking closure providing extra security



Double tube pull handle and double wheels for optimal comfort



Seal to limit moisture penetration





49539

**Spinner 55**

	40 x 55 x 20
	34 l
	2.9 kg



49307

**Spinner 69**

	49 x 69 x 29
	79 l
	4.2 kg



49308

**Spinner 75**

	52 x 75 x 31
	102 l
	4.6 kg



59244

**Spinner 81**

	55 x 81 x 35
	138 l
	5.0 kg



**SPECTROLITE 3.0 TRVL**

**D'LITE**

**RESPARK**

**VAYCAY**

**LITEBEAM**

**NEW**

**NEW**

**56**

**58**

**60**

**64**

**66**



*Selection*

SOFTSIDE

SOFTSIDE

SOFTSIDE

SOFTSIDE

SOFTSIDE

**SOFTSIDE**

SOFTSIDE

SOFTSIDE

SOFTSIDE

SOFTSIDE

SOFTSIDE

SOFTSIDE

SOFTSIDE

SOFTSIDE

SOFTSIDE

SOFTSIDE

SOFTSIDE

# SPECTROLITE 3.0 TRVL™

B670

Spectrolite 3.0 TRVL gives the answer to the new generation of business travel. The collection brings durability and security to the highest level, while meeting all needs of frequent business travellers.

- Modern, tech-inspired design, in perfect match with Spectrolite 3.0 Business bags
- Smart business organisation on all cabins, including USB A & C port, powerbank pouch and laptop/tablet sleeve
- Integrated TSA cable lock and secure double coil zipper on main compartment
- Compressible floating divider, including shoe, wet and zipped pocket, ensuring a comfortable packing experience

## MATCHES

SPECTROLITE 3.0 P. 96



Black  
1041



Deep Blue  
1277



RECYCLEX™

Durable suspension wheels



Expandability



Smart business organisation





# Samsonite Spectro...



Selection

SOFTSIDE



137350

## Garment Sleeve

	54 x 54/105 x 5
	0.01 l
	0.94 kg



LIMITED  
5 year  
WARRANTY

137340

## Upright 55 EXP

	40 x 55 x 23/27
	41.5/47 l
	2.8 kg
	26.7 cm/10.5" - 26.6 x 18.3 x 1.5 cm
	39.6 cm/15.6" - 37.5 x 25.9 x 2.8 cm



LIMITED  
5 year  
WARRANTY

137342

## Spinner 55

	40 x 55 x 20
	40 l
	2.6 kg
	26.7 cm/10.5" - 26.6 x 18.3 x 1.5 cm
	39.6 cm/15.6" - 37.5 x 25.9 x 2.8 cm



LIMITED  
5 year  
WARRANTY

137344

## Spinner 55 EXP DF

	40 x 55 x 23/27
	40/47 l
	3.0 kg
	26.7 cm/10.5" - 26.6 x 18.3 x 1.5 cm
	39.6 cm/15.6" - 37.5 x 25.9 x 2.8 cm



LIMITED  
5 year  
WARRANTY

137346

## Spinner 68 EXP

	44 x 68 x 28/32
	80/87 l
	3.4 kg
	26.7 cm/10.5" - 26.6 x 18.3 x 1.5 cm
	39.6 cm/15.6" - 37.5 x 25.9 x 2.8 cm



LIMITED  
5 year  
WARRANTY

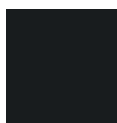
137347

## Spinner 78 EXP

	49 x 78 x 31/35
	112/121 l
	3.9 kg
	26.7 cm/10.5" - 26.6 x 18.3 x 1.5 cm
	39.6 cm/15.6" - 37.5 x 25.9 x 2.8 cm

Lightweight and designed for the finest comfort-on-the go, enlighten yourself with our D'Lite collection.

- A true lightweight icon at 1.9 kg for the Spinner 55 cm, featuring a laptop sleeve 15.6" and removable wet pouch on all cabins
- Providing the greatest comfort with its renowned bridge top handle, suspension wheels and vertical webbing interior straps
- Various range of check-in sizes including expandability, to answer your individual packing needs
- Broad and elegant colour palette matching perfectly with the C-Lite collection



Black  
1041



Midnight Blue  
1549



Chili Red  
1198



Climbing Ivy  
9199



**NEW**

Fuchsia  
1347



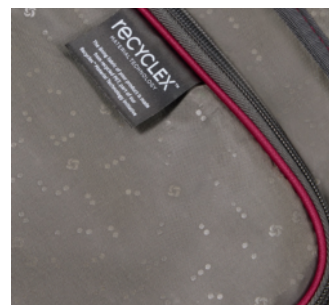
RECYCLEX™



Easy-access U-shape pocket  
& laptop sleeve 15.6"



Recyclax™ interior fabric



Durable double suspension  
wheels





Samsonite D'Lite ...



Selection

SOFTSIDE



137234

### Beauty Case

36 x 26 x 19

15 l

0.6 kg

abc



137229

### Spinner 55 EXP

40 x 55 x 22/25

39/44 l

2 kg

39.6 cm/15.6" - 37.5 x 25.9 x 2.8 cm

abc



137230

### Spinner 63 EXP

42 x 63 x 26/29

60/65 l

2.3 kg

abc



137232

### Spinner 78 EXP

49 x 78 x 31/34

107/118 l

3 kg

abc



137228

### Upright 55 EXP

40 x 55 x 22/25

40/45 l

2 kg

39.6 cm/15.6" - 37.5 x 25.9 x 2.8 cm

abc



139942

### Spinner 55

40 x 55 x 20

40 l

1.9 kg

39.6 cm/15.6" - 37.5 x 25.9 x 2.8 cm

abc



137231

### Spinner 71 EXP

46 x 71 x 29/32

85/91 l

2.6 kg

abc



137233

### Spinner 83 EXP

54 x 83 x 34/37

145/155 l

3.2 kg

abc

The Respark collection is our sustainable and durable travel solution, designed with a high focus on volume and practicality.

- All-in offer of trusted Duffles, Bags, Cabins and check-in Spinners
- Exterior and interior fabrics made out of post-consumer recycled PET bottles, part of our Recyclex™ Material Technology Initiative
- High packing capacity and expandability on multiple models
- Practical and secure: corner protection, extra high wheel housings, PU back protection and kickplate
- Double suspension wheels on Spinner models



Ozone Black  
7416



Midnight Blue  
1549



Forest Green  
1339



**NEW**

Sand Storm  
A010



RECYCLEX™

## MATCHES

RESPARK TOILET KIT P. 186



Chunky 10 mm zipper tapes on check-in models and secure TSA cable lock



C-shape front compartment for quick and flexible packing



Personalisation loop





# Samsonite Respar...



*Selection*

SOFTSIDE



143311

## Upright 45 Underseater



	35 x 45 x 20
	29 l
	1.8 kg
	26.7 cm/10.5" - 26.6 x 18.3 x 1.5 cm
	39.6 cm/15.6" - 37.5 x 25.9 x 2.8 cm
	abc



143312

## Upright 55 EXP



	40 x 55 x 23/27
	48/57 l
	2.5 kg
	39.6 cm/15.6" - 37.5 x 25.9 x 2.8 cm
	abc



143325

## Spinner 55 EXP Length 35 cm



	35 x 55 x 22/25
	39/44 l
	2.5 kg
	39.6 cm/15.6" - 37.5 x 25.9 x 2.8 cm
	abc



143328

## Spinner 55 Strict



	40 x 55 x 20
	43 l
	2.4 kg
	39.6 cm/15.6" - 37.5 x 25.9 x 2.8 cm
	abc





LIMITED  
5 year  
WARRANTY

143329

**Spinner 55 DF EXP**

	40 x 55 x 23/27
	43/49 l
	3 kg
	39.6 cm/15.6" - 37.5 x 25.9 x 2.8 cm



abc





LIMITED  
5 year  
WARRANTY

143330

**Spinner 67 EXP**

	43 x 67 x 29/33
	82/92 l
	3.2 kg



abc





LIMITED  
5 year  
WARRANTY

143331

**Spinner 79 EXP**

	48 x 79 x 31/35
	124/140 l
	3.6 kg



abc





LIMITED  
5 year  
WARRANTY

143332

**Spinner 82 EXP**

	53 x 82 x 34/38
	156/170 l
	4 kg



abc



143333

### Garment Bag Tri-Fold



57 x 36 x 17



62 l



1.7 kg



abc



143334

### Laptop Shoulder Bag



45 x 33 x 14



24 l



0.7 kg



39.6 cm/15.6" -  
37.5 x 25.9 x 2.8 cm



abc



143335

### Duffle 48 Overnighter



48 x 35 x 24



36.5 l



0.7 kg



abc



143336

### Duffle 55 Twonighter



55 x 33 x 30



54 l



0.7 kg



abc

Modern, effortless and ready-to-go. Vaycay is designed for those who appreciate sleek design, quality and convenience at a great price. The wide range of suitcases and bags are perfect for every journey.

- Front pockets allowing you to tuck-away last-minute belongings and small accessories
- Expandability available on most models
- All pockets are lockable, with an integrated TSA008 lock with kissing sliding pullers on the suitcases
- Secure corner protection on the suitcases
- Practical packing thanks to packing straps, pockets and details colour matching with the exterior
- Interior fabrics made from post-consumer recycled PET bottles, part of our Recyclex™ Material Technology Initiative



Black  
1041



Pistachio Green  
0588



Navy Blue  
1598



Golden Yellow  
1371



Lavender  
1491



RECYCLEX™



Smooth-rolling, silent double wheels



Smart sleeve and shoulder strap included on the Duffle



Personalisation loop





145454  
**Toilet Kit**



	26 x 18 x 12
	5 l
	0.2 kg



145453  
**Duffle 53**



	53 x 28 x 31
	54 l
	0.8 kg



145446  
**Spinner 55 EXP**  
Length 35 cm



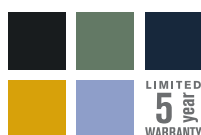
	35 x 55 x 22/25
	36/41 l
	2.0 kg



145450  
**Spinner 55 DF EXP**



	40 x 55 x 23/26
	42/48 l
	2.4 kg



145449  
**Spinner 55**  
Length 40 cm



	40 x 55 x 20
	40 l
	2.0 kg



145451  
**Spinner 66 EXP**



	43 x 66 x 27/30
	68/74 l
	2.6 kg



145452  
**Spinner 77 EXP**



	47 x 77 x 29/32
	104/112 l
	3.1 kg

Meet Litebeam, our lightest collection to date. Its modern design, lightweight yet durable construction and practical features will change your travel mindset. Allowing you to move around easily, enjoying every step of the way.

- Our lightest softside: only 1.8 kg for the Spinner 55
- Broad cabin offer, including Underseater, Spinner and Upright
- High-volume capacity and expandability on check-in sizes
- All pockets are lockable and an integrated TSA008 lock with kissing sliding pullers
- Practical packing thanks to packing straps, pockets and details colour matching with the exterior
- Interior fabrics made from post-consumer recycled PET bottles, part of our Recyclex™ Material Technology Initiative



Black  
1041



Midnight Blue  
1549



Climbing Ivy  
9199



Ocean Blue  
1621



Tangerine Orange  
7976

LIMITED  
5 year  
WARRANTY



RECYCLEX™



Smooth-rolling, silent double wheels



Smart sleeve on the Underseater



Personalisation loop





146850  
**Upright 45 Underseater**

	35 x 45 x 20
	26 l
	1.6 kg



146851  
**Upright 55**

	40 x 55 x 20
	39 l
	1.7 kg



146852  
**Spinner 55**

	40 x 55 x 20
	39 l
	1.8 kg



146853  
**Spinner 66 EXP**

	43 x 66 x 26/29
	67/73 l
	2.4 kg



146854  
**Spinner 77 EXP**

	47 x 77 x 28/31
	103/111 l
	2.8 kg

**AIREA**  
**BASE BOOST**  
**CITYBEAT**

**70**  
**72**  
**74**



# SOFTSIDE

Whether you are travelling by airplane, train or car, Airea sets the new standard for travelling light and fashionable.

- Elegant and young design inspired by the built-on pocket trend as seen in fashion
- Lightweight and broad cabin offer as of 1.80 kg for the Spinner 55



Black  
1041



Dark Blue  
1247



**NEW**

Sand Storm  
A010



**NEW**

Hibiscus Red  
A011



Recessed double wheels  
providing extra capacity



Bespoke material combination  
with shiny black metal detailing



Hidden expandability on check-in  
sizes for extra packing capacity





Samsonite travel...



SOFTSIDE



133627

### Beauty Case



	35 x 21 x 19
	13 l
	0.4 kg



137151

### Toilet Kit



	29 x 17 x 14
	7.5 l
	0.3 kg



137153

### Duffle 45



	45 x 26 x 26
	36 l
	0.6 kg



133621

### Upright 55 EXP Top Pocket



	40 x 55 x 20/23
	41/46 l
	2.0 kg



133622

### Spinner 55 EXP Length 35 cm



	35 x 55 x 22/25
	38/43.5 l
	2.1 kg

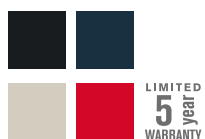


133623

### Spinner 55 Strict



	40 x 55 x 20
	41 l
	1.8 kg



133625

### Spinner 67 EXP



	43 x 67 x 26/30
	73.5/81.5 l
	2.7 kg



133626

### Spinner 78 EXP



	49 x 78 x 29/33
	111.5/120 l
	2.8 kg

**Base Boost: a range close to the budget-conscious traveller's heart.**

- Characterized by core values such as quality, protection and lightness
- Trendy, modern look thanks to the playful take on the dip-dye trend within the same colour hues



Black  
1041



Navy Blue  
1598

LIMITED  
5 year  
WARRANTY



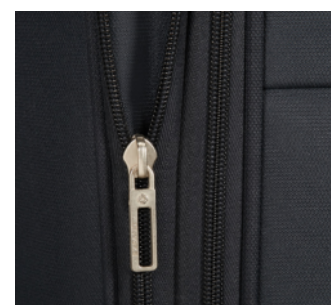
TSA lock on all sizes for secure and stress-free travel



Eye for detail: distinctive logo, pullers and pleat caps



Expandability feature on check-in sizes





79195

**Upright 55**  
**Lenght 40 cm**



40 x 55 x 20



41 l



2.0 kg



79200

**Spinner 55**



40 x 55 x 20



39 l



2.0 kg



79201

**Spinner 66 EXP**



44 x 66 x 28/31



67.5/73.5 l



2.7 kg



79202

**Spinner 78 EXP**



48 x 78 x 31/34



105/112.5 l



3.1 kg



Inspired by the beats of the dynamic city life, Citybeat is designed for everyone who appreciates simplicity, performance and all-in-one style at a great price.

- Its overall contemporary design, along with the webbing logo strap and metal detailing help it stand out on the conveyor belt
- Broad and lightweight assortment starting at 2 kg for the Spinner 55



Black  
1041



Navy Blue  
1598



Red  
1726



**NEW**

Golden Yellow  
1371



**NEW**

Petrol Blue  
1686

LIMITED  
**5**  
year  
WARRANTY



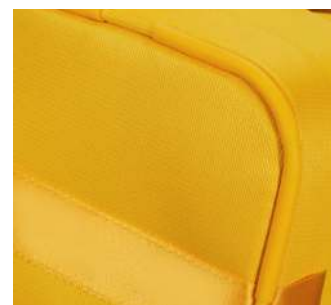
Eye for detail: webbing logo strap and pleat caps



TSA lock on all sizes for secure and stress-free travel



Secure corner protection on all items





128828  
**Upright 55**

	40 x 55 x 20
	42 l
	2 kg



128829  
**Spinner 55  
Length 35 cm**

	35 x 55 x 20
	35 l
	2 kg



128830  
**Spinner 55  
Length 40 cm**

	40 x 55 x 20
	42 l
	2 kg



128831  
**Spinner 66 EXP**

	42 x 66 x 28/31
	67/73 l
	2.7 kg



128832  
**Spinner 78 EXP**

	47 x 78 x 30/33
	105/113 l
	3.1 kg



*Selection*

CASUAL

CASUAL

CASUAL

CASUAL

CASUAL

CASUAL

**CASUAL**

CASUAL

CASUAL

CASUAL

CASUAL

CASUAL

CASUAL

CASUAL

Made to accommodate the new ways of travelling, Ecodiver combines practicality with a stylish design, made from sustainable water-resistant coated fabrics. The collection is developed with special attention to sustainability, security and comfort. With its all-in assortment, including daypacks and travel items, Ecodiver will guide you through the city and long-haul trips.

- Iconic multihandles design - including top, bottom side and two front handles
- Eco fabrics made from recycled PET, part of our Recyclex™ Material Technology Initiative
- Safe & secure: reflective logo on all items & TSA lock for the wheeled items
- Full travel comfort: ergonomic double wheel tube and an additional C-shape packing compartment in the front



Black  
1041



Blue Nights  
2165



Yellow  
1924



Climbing Ivy  
9199



**NEW**

Petrol Blue/Lime  
A012



RECYCLEX™



Water-resistant material



Personalisation loop & compression straps\*



Reflective details to improve visibility





Samsonite Ecodiv...



Selection

SCAFSUA E



140879

### Belt Bag



	35 x 16 x 10
	3 l
	0.2 kg



140878

### Toilet Kit



	26 x 16 x 13
	4.5 l
	0.2 kg



140809

### Laptop Backpack S



	33 x 44 x 16
	16 l
	0.7 kg
	35.6 cm/14" - 34 x 24 x 2.4 cm



140871

### Laptop Backpack M



	32 x 45 x 20
	19 l
	0.9 kg
	26.7 cm/10.5" - 26.6 x 18.3 x 1.5 cm
	39.6 cm/15.6" - 37.5 x 25.9 x 2.8 cm



140872

### Laptop Backpack L



	35 x 48 x 23
	26 l
	1.0 kg
	26.7 cm/10.5" - 26.6 x 18.3 x 1.5 cm
	43.9 cm/17.3" - 37.5 x 25.9 x 2.8 cm



140874

### Urban Laptop Backpack M USB



	31 x 44 x 20
	18 l
	0.8 kg
	26.7 cm/10.5" - 26.6 x 18.3 x 1.5 cm
	39.6 cm/15.6" - 37.5 x 25.9 x 2.8 cm



LIMITED  
5 year  
WARRANTY

140880

## Duffle/WH 55

	40 x 55 x 20
	48 l
	2.3 kg



LIMITED  
5 year  
WARRANTY

140881

## Duffle/WH 55 L 35CM DF

	35 x 55 x 23
	40 l
	2.4 kg
	39.6 cm/15.6" - 37.5 x 25.9 x 2.8 cm



LIMITED  
5 year  
WARRANTY

140882

## Duffle/WH 55 Backpack

	40 x 55 x 25
	51 l
	2.5 kg



LIMITED  
5 year  
WARRANTY

140883

## Duffle/WH 67

	43 x 67 x 28
	76 l
	2.8 kg



LIMITED  
5 year  
WARRANTY

140884

## Duffle/WH 79

	44 x 79 x 31
	122 l
	3.2 kg



LIMITED  
5 year  
WARRANTY

140885

## Spinner Duffle 55

	40 x 55 x 23
	50 l
	2.6 kg



Selection

SCAFSUA E



LIMITED  
5 year  
WARRANTY

140886  
**Spinner Duffle 79**

	47 x 79 x 32
	117 l
	3.6 kg



140875  
**Duffle S**

	55 x 24 x 31
	40 l
	1.0 kg



140876  
**Duffle M**

	63 x 29 x 35
	60 l
	1.3 kg



140877  
**Duffle L**

	69 x 36 x 37
	90 l
	1.5 kg



142896  
**Travel Backpack S 38L**

	34 x 54 x 26
	38 l
	1.6 kg
	26.7 cm/10.5" - 26.6 x 18.3 x 1.5 cm
	43.9cm/17.3" - 42.2 x 28.7 x 3.3cm



142897  
**Travel Backpack M 55L**

	34 x 61 x 29
	55 l
	1.9 kg
	26.7 cm/10.5" - 26.6 x 18.3 x 1.5 cm
	43.9cm/17.3" - 42.2 x 28.7 x 3.3cm

**MIDTOWN  
ROADER**

**84  
86**





CASUAL  
CASUAL  
CASUAL  
CASUAL  
CASUAL  
CASUAL  
**CASUAL**  
CASUAL  
CASUAL  
CASUAL  
CASUAL  
CASUAL  
CASUAL  
CASUAL

Meet Midtown, our urban lifestyle collection, made to cater for all your packing needs and take you through the city from dawn till dusk.

- Lightweight double frame compartment duffles on wheels
- Exterior partially made from recycled PET, part of our Recyclex™ Material Technology Initiative
- Pack your way with the split frame opening and additional front access via the U-shape opening to the main compartment
- Stay secure with the TSA cable lock on all wheeled items



Black  
1041



Dark Blue  
1247



Camo Grey  
L403



RECYCLEX™



Practical multiple-handle design, making handling easier



Recyclex™ and water repellent PU coated material combination



TSA cable lock to securely close all pockets





133800  
**Laptop Backpack S**

	30 x 41 x 19
	19 l
	0.5 kg
	26.7 cm/10.5" - 26.6 x 18.3 x 1.5 cm
	35.6 cm/14" - 34 x 24 x 2.4 cm



133803  
**Laptop Backpack M**

	30 x 45 x 21
	23 l
	0.7 kg
	26.7 cm/10.5" - 26.6 x 18.3 x 1.5 cm
	39.6 cm/15.6" - 37.5 x 25.9 x 2.8 cm



133805  
**Laptop Backpack L EXP**

	31 x 45 x 23/25.5
	29/32 l
	0.9 kg
	26.7 cm/10.5" - 26.6 x 18.3 x 1.5 cm
	39.6 cm/15.6" - 37.5 x 25.9 x 2.8 cm



133849  
**Duffle/WH 55 Backpack**

	40 x 55 x 23
	43 l
	2.6 kg
	26.7 cm/10.5" - 26.6 x 18.3 x 1.5 cm
	39.6 cm/15.6" - 37.5 x 25.9 x 2.8 cm



133850  
**Duffle/WH 79**

	43 x 79 x 30
	103 l
	3.1 kg

Sleek, versatile and colourful are the key words to describe our latest urban casual collection. Get ready for Roader, our go-to collection for commuting and adventures abroad!

- Secure TSA lock on all wheeled items
- With compression straps to adjust the volume and laptop sleeve 15.6"
- 3 well featured backpacks, including: laptop 15.6", tablet 10.1" sleeve, water bottle pocket, rain cover, paper sleeve, compression straps, pen holder, etc.
- Exterior fabric and interior lining made from recycled PET bottles, part of our Recyclex™ Material Technology Initiative



Deep Black  
1276



Dark Blue  
1247



Radiant Yellow  
4702



Drifter Grey  
E569



Olive Green  
1635



**NEW**

Deep Blue  
1277



**NEW**

Tangerine Orange  
7976



RECYCLEX™



Compression straps\*



Personalisation loop



Front pocket laptop sleeve\*





CASUAL



143263

Belt Bag



	31 x 12 x 10
	3 l
	0.2 kg



143264

Laptop Backpack S



	30 x 42 x 19
	17 l
	0.6 kg
	26.7 cm/10.5" - 26.6 x 18.3 x 1.5 cm
	35.6 cm/14" - 34 x 24 x 2.4 cm



143265

Laptop Backpack M



	33 x 44 x 23
	24 l
	0.8 kg
	26.7 cm/10.5" - 26.6 x 18.3 x 1.5 cm
	39.6 cm/15.6" - 37.5 x 25.9 x 2.8 cm



143266

Laptop Backpack L EXP



	35 x 46 x 22/26
	31.5/39.5 l
	1.1 kg
	26.7 cm/10.5" - 26.6 x 18.3 x 1.5 cm
	43.9 cm/17.3" - 42.2 x 28.7 x 3.8 cm



LIMITED  
5 year  
WARRANTY

143267

Laptop BP/WH 55



	39 x 55 x 22
	28 l
	2.3 kg
	26.7 cm/10.5" - 26.6 x 18.3 x 1.5 cm
	43.9 cm/17.3" - 42.2 x 28.7 x 3.8 cm



144244  
**Duffle XS**

	40 x 25 x 20
	20 l
	0.3 kg



143268  
**Duffle S**

	53 x 32 x 34
	55.5 l
	0.6 kg



LIMITED  
5 year  
WARRANTY

143269  
**Duffle/WH 55 L 35**

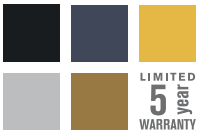
	35 x 55 x 23
	39.5 l
	2.2 kg
	26.7 cm/10.5" - 26.6 x 18.3 x 1.5 cm
	39.6 cm/15.6" - 37.5 x 25.9 x 2.8 cm



143271  
**Duffle/WH 68**

	41 x 68 x 30
	81 l
	2.8 kg





143273	
<b>Duffle/WH 79</b>	
	45 x 79 x 32
	112 l
	3.1 kg



143274	
<b>Travel Backpack S 38L</b>	
	33 x 57 x 26
	38 l
	1.4 kg
	26.7 cm/10.5" - 26.6 x 18.3 x 1.5 cm
	43.9 cm/17.3" - 42.2 x 28.7 x 3.8 cm



143275	
<b>Travel Backpack M 55L</b>	
	36 x 61 x 28
	55 l
	1.5 kg
	26.7 cm/10.5" - 26.6 x 18.3 x 1.5 cm
	43.9 cm/17.3" - 42.2 x 28.7 x 3.8 cm

<b>PRO-DLX 6</b>	<b>NEW</b>	<b>92</b>
<b>SPECTROLITE 3.0</b>		<b>96</b>
<b>BIZ2GO</b>		<b>98</b>
<b>XBR 2.0</b>	<b>NEW</b>	<b>100</b>
<b>SECURIPAK</b>		<b>102</b>
<b>SECURIPAK S</b>		<b>104</b>
<b>ZALIA 3.0</b>	<b>NEW</b>	<b>106</b>





*Selection*

BUSINESS  
& BAGS

BUSINESS  
& BAGS

BUSINESS  
& BAGS

**BUSINESS  
& BAGS**

BUSINESS  
& BAGS

BUSINESS  
& BAGS

BUSINESS  
& BAGS

BUSINESS  
& BAGS

A well-awaited facelift, coming in the assortment to revolutionise the concept of heritage backpack.

PRO-DLX 6 will be a step forward from its predecessor PRO-DLX 5 as the DNA will remain but the look will be refreshed in order to become modern and aligned with trends. The line offers a wide assortment focused on core models and linked with upcoming trends.

- Recycled PET lining and ballistic Nylon
- Simplified organisation and updated laptop compartment
- Softer construction, contemporary shape following the market trends



Black  
1041



Blue  
1090



Green  
1388



Red  
1726



Framed  
A123



Camouflage  
2207



RECYCLEX™

## MATCHES

PRO-DLX 6 SLG P. 194



2 doors usb (A+C)



New logo



Leather touchpoint





147143

### Crossover S 7.9"



	15.5 x 22 x 6
	2 l
	0.2 kg
	20.3 cm/8" - 21.6 x 13.5 x 1.4 cm



147144

### Crossover M 9.7"



	18.5 x 24 x 8.5
	4 l
	0.3 kg
	24.5 cm/9.7" - 24 x 17 x 1.3 cm



147141

### Bailhandle 15.6" EXP



	42 x 30.5 x 15/21
	16/23 l
	1.4 kg
	26.7 cm/10.5" - 26.6 x 18.3 x 1.5 cm
	39.6 cm/15.6" - 37.5 x 25.9 x 2.8 cm



147142


### Bailhandle 17.3" EXP



	46 x 33 x 17.5/23.5
	24.5/31 l
	1.5 kg
	26.7 cm/10.5" - 26.6 x 18.3 x 1.5 cm
	43.9 cm/17.3" - 42.2 x 28.7 x 3.8 cm



## Backpack 14.1"

	28 x 41 x 14
	12.5 l
	1.1 kg
	26.7 cm/10.5" - 26.6 x 18.3 x 1.5 cm
	35.6 cm/14" - 34 x 24 x 2.4 cm
         	
   	




## Backpack 15.6"

	32 x 42 x 15
	15 l
	1.2 kg
	26.7 cm/10.5" - 26.6 x 18.3 x 15 cm
	39.6 cm/15.6" - 37.5 x 25.9 x 2.8 cm
        	
        	



## Backpack 3V 15.6" EXP

	30 x 43 x 15/21
	21/26 l
	1.3 kg
	26.7 cm/10.5" - 26.6 x 18.3 x 1.5 cm
	39.6 cm/15.6" - 37.5 x 25.9 x 2.8 cm
         	
    	



## Backpack 3V 17.3" EXP

	32 x 46 x 18/24
	24.5/33 l
	1.5 kg
	26.7 cm/10.5" - 26.6 x 18.3 x 1.5 cm
	43.9 cm/17.3" - 42.2 x 28.7 x 3.8 cm
         	
    	



**Laptop Backpack/WH**  
**17.3"**

	34 x 50 x 20
	25 l
	Est. 2.6 kg
	26.7 cm / 10.5" - 26.6 x 18.3 x 1.5 cm
	43.9 cm / 17.3" - 42.2 x 28.7 x 3.8 cm
         	
         	



147145

### Tri-Fold Garment Bag



55 x 40 x 20



1.8 kg



LIMITED  
5 year  
WARRANTY

148137

### Upright 55 EXP



40 x 55 x 23/28



38.5/44 l



Est. 3.0 kg



26.7 cm/10.5" -  
26.6 x 18.3 x 1.5 cm



39.6 cm/15.6" -  
37.5 x 25.9 x 2.8 cm



LIMITED  
5 year  
WARRANTY

148162

### Rolling Tote 15.6"



46 x 36 x 20



20.5 l



Est. 3.1 kg



26.7 cm/10.5" -  
26.6 x 18.3 x 1.5 cm



39.6 cm/15.6" -  
37.5 x 25.9 x 2.8 cm



LIMITED  
5 year  
WARRANTY

148138

### Spinner Tote 15.6"



43 x 40 x 20



25 l



Est. 3.2 kg



26.7 cm/10.5" -  
26.6 x 18.3 x 1.5 cm



39.6 cm/15.6" -  
37.5 x 25.9 x 2.8 cm



LIMITED  
5 year  
WARRANTY

148135

### Spinner 55 EXP



40 x 55 x 23/28



41/51 l



Est. 3.2 kg



26.7 cm/10.5" -  
26.6 x 18.3 x 1.5 cm



39.6 cm/15.6" -  
37.5 x 25.9 x 2.8 cm



LIMITED  
5 year  
WARRANTY

148136

### Spinner 55 Strict



40 x 55 x 20



37 l



Est. 2.8 kg



26.7 cm/10.5" -  
26.6 x 18.3 x 1.5 cm



39.6 cm/15.6" -  
37.5 x 25.9 x 2.8 cm



# SPECTROLITE 3.0™

B656

With refreshed design and organisation, this line is the benchmark of perfect business companion.

- Organised to improve accessibility and capacity
- Interior lining made from recycled PET bottles, part of our Recyclex™ Material Technology Initiative
- Hygienic removable pouch to safely store your surgery masks (\*selected assortment)

## MATCHES

SPECTROLITE 3.0 TRVL P. 56



Black  
1041



Deep Blue  
1277



RECYCLEX™



USB port to charge devices  
(powerbank sold separately)



Hidden shoulder strap pocket



Water resistant laptop  
compartment





Samsonite Spec...



SMART SLEEVE  
WITH HIDDEN POCKET

Selection

BUSINESS & BAGS



137267

### Tablet Crossover S 7.9"



	15.5 x 22 x 5
	2 l
	0.3 kg
	20.3 cm/8" - 21.6 x 13.5 x 1.4 cm



137263

### Bailhandle 15.6" EXP



	42 x 32 x 13/21
	18/22 l
	1.4 kg
	26.7 cm/10.5" - 26.6 x 18.3 x 1.5 cm
	39.6 cm/15.6" - 37.5 x 25.9 x 2.8 cm



137258

### Laptop Backpack 15.6" EXP\*



	30 x 42.5 x 15/23
	23/26.5 l
	1.5 kg
	26.7 cm/10.5" - 26.6 x 18.3 x 1.5 cm
	39.6 cm/15.6" - 37.5 x 25.9 x 2.8 cm



137262

### Bailhandle 14.1"



	38 x 27.5 x 11.5
	12 l
	1.1 kg
	26.7 cm/10.5" - 26.6 x 18.3 x 1.5 cm
	35.6 cm/14" - 34 x 24 x 2.4 cm



137256

### Laptop Backpack 14.1"\*



	28.5 x 41 x 14
	16.5 l
	1.4 kg
	26.7 cm/10.5" - 26.6 x 18.3 x 1.5 cm
	35.6 cm/14" - 34 x 24 x 2.4 cm



137260

### Laptop Backpack 17.3" EXP\*



	32 x 46 x 16/24
	26.5/30.5 l
	1.6 kg
	26.7 cm/10.5" - 26.6 x 18.3 x 1.5 cm
	43.9 cm/17.3" - 42.2 x 28.7 x 3.8 cm



137268

### Rolling Tote 17.3" EXP



	39 x 48.5 x 24.5/32.5
	37.5/42.5 l
	3.5 kg
	26.7 cm/10.5" - 26.6 x 18.3 x 1.5 cm
	43.9 cm/17.3" - 42.2 x 28.7 x 3.8 cm



Believed to be the best business backpack while commuting on 2 wheels. Biz2Go is the perfect integration of the Samsonite Business DNA in terms of quality and organisation mixed with a modern look and up to date details that improve the comfort, the storable space and look.

- Maximised comfort while carrying
- Exterior fabric and interior lining made from recycled PET bottles, part of our Recyclex™ Material Technology Initiative
- USB port



Black  
1041



Deep Blue  
1277



Earth Green  
1316



Ink blue  
1443



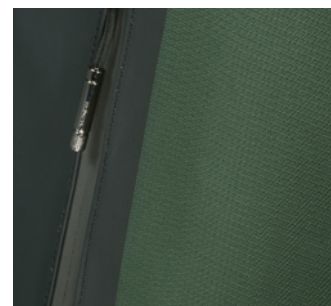
Radiant Yellow  
4702



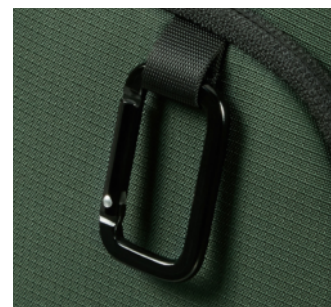
RECYCLEX™



Reflective details  
to improve visibility



Removable carabiner enriches  
look and functionality



Ergonomic shock absorbing  
straps to increase comfort





142140

### Waistbag

	39 x 14 x 7.5
	2.5 l
	0.2 kg



142141

### Crossover 9.7"

	19 x 24 x 8.5
	4 l
	0.3 kg
	24.5 cm/9.7" - 24 x 17 x 1.3 cm



142142

### Laptop Backpack 14.1"

	31 x 43 x 21
	20.5 l
	1 kg
	26.7 cm/10.5" - 26.6 x 18.3 x 1.5 cm
	35.6 cm/14" - 34 x 24 x 2.4 cm



142144

### Backpack 15.6'' Daytrip

	32 x 43 x 21
	22.5 l
	1.1 kg
	26.7 cm/10.5" - 26.6 x 18.3 x 1.5 cm
	39.6 cm/15.6" - 37.5 x 25.9 x 2.8 cm



142145

### Backpack 17.3'' EXP Overnight

	33 x 46 x 23/25
	30/35 l
	1.3 kg
	26.7 cm/10.5" - 26.6 x 18.3 x 1.5 cm
	43.9 cm/17.3" - 42.2 x 28.7 x 3.8 cm



The facelift of a symbol of our heritage segment: XBR 2.0 maintains the functionality and premiumness of its predecessor while modernising it to be up to the new generation of businessmen.

- Distinct and functional design with a new squared shape
- Business organisation and separated laptop compartment
- Easy access pocket on a shoulder strap



Black  
1041



Blue  
1090



Foliage Green  
3869



reCYCLEX™

Smart sleeve for ease of transport



Pu details



Refined zipper pullers & modern logo plate





146514

### Crossover S 7.9"



	15.5 x 22 x 5.5
	2 l
	0.3 kg
	20.3 cm/8" - 21.6 x 13.5 x 1.4 cm



146512

### Bailhandle 2C 15.6"



	40.5 x 30 x 12
	14 l
	1.2 kg
	26.7 cm/10.5" - 26.6 x 18.3 x 1.5 cm
	39.6 cm/15.6" - 37.5 x 25.9 x 2.8 cm



146515

### Crossover M 9.7"



	18.5 x 24 x 8
	3.5 l
	0.4 kg
	24.5 cm/9.7" - 24 x 17 x 1.3 cm



146513

### Bailhandle 3C 15.6" EXP



	40.5 x 30 x 17/23
	20/28 l
	1.7 kg
	26.7 cm/10.5" - 26.6 x 18.3 x 1.5 cm
	39.6 cm/15.6" - 37.5 x 25.9 x 2.8 cm



146509

### Backpack 14.1"



	28 x 40.5 x 13
	15.5 l
	1.0 kg
	26.7 cm/10.5" - 26.6 x 18.3 x 1.5 cm
	35.6 cm/14" - 34 x 24 x 2.4 cm



146510

### Backpack 15.6"



	30 x 43 x 14
	19.5 l
	1.2 kg
	26.7 cm/10.5" - 26.6 x 18.3 x 1.5 cm
	39.6 cm/15.6" - 37.5 x 25.9 x 2.8 cm



146511

### Backpack 17.3"



	32 x 46 x 17
	22.5 l
	1.5 kg
	26.7 cm/10.5" - 26.6 x 18.3 x 1.5 cm
	43.9 cm/17.3" - 42.2 x 28.7 x 3.8 cm

The anti-theft collection that mixes comfort of an urban model with several security features.

- Exterior fabric and interior lining made from recycled PET bottles, part of our Recyclex™ Material Technology Initiative
- Cut resistant material layer\*
- Reflective details to improve visibility

## MATCHES

SECURIPAK S P. 104



Black Steel  
T061



Eclipse Blue  
7769



True Blue  
1875



Cool Grey  
2447



Sunset Yellow  
1843



Garnet Red  
1361



Foliage Green  
3869



RECYCLEX™



Hidden pocket with RFID protection\*



USB port to charge devices (powerbank sold separately)



Reflective details to improve visibility



reddot winner 2020

\*on selected assortment only

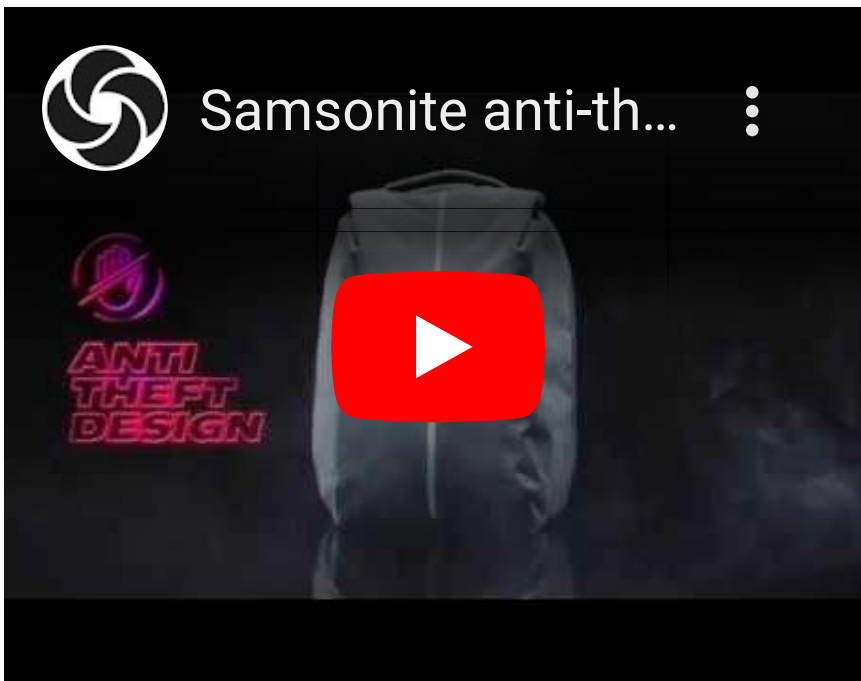


Samsonite anti-th...



Selection

BUSINESS & BAGS



128822

### Laptop Backpack 15.6"

	30 x 44 x 16
	17 l
	0.7 kg
	26.7 cm/10.5" - 26.6 x 18.3 x 1.5 cm
	39.6 cm/15.6" - 37.5 x 25.9 x 2.8 cm



140563

### Waistbag

	34.5 x 14 x 5.5
	1.6 l
	0.2 kg



140562

### Travel Backpack 15.6" EXP

	31.5 x 42.5 x 14.5/17
	30 l
	1 kg
	26.7 cm/10.5" - 26.6 x 18.3 x 1.5 cm
	39.6 cm/15.6" - 37.5 x 25.9 x 2.8 cm



140564

### Duffle/WH 55 Lenght 35 cm DF

	35 x 55 x 20
	39 l
	2.3 kg
	26.7 cm/10.5" - 26.6 x 18.3 x 1.5 cm
	39.6 cm/15.6" - 37.5 x 25.9 x 2.8 cm



**A backpack to be safe anytime! This anti-theft collection mixes a stylish shape with security features.**

- Exterior fabric and interior lining made from recycled PET bottles, part of our Recyclex™ Material Technology Initiative
- Cut resistant material layer
- Internal business organisation with zipped pocket
- Hidden side pockets, one of them with RFID
- Protection and a Quick Access pocket

## MATCHES

SECURIPAK P. 102



Black Steel  
T061



Eclipse Blue  
7769



Stone Grey  
1830



RECYCLEX™

USB port to charge your devices



Reflective details on frontal panel



RFID pocket to protect your documents





130109

### Laptop Backpack 14.1"



29.5 x 38.5 x 12.5



10 l



0.6 kg



The 3.0 version, made for the first time with recycled PET bottles, comes with new styles and details. The line is even more elegant and feminine designed to help you commute light and stay organised.

- Exterior fabric and interior lining made from recycled PET bottles, part of our Recyclex™ Material Technology Initiative
- Shiny Nickel finishing hardware
- Business organisation
- Geometrical pullers and handles attachment



Black  
1041



Dark Navy  
1265



Dark Red  
1267



Old Rose  
1630



Silver Grey  
1802



Laptop and tablet compartment



Inner organisation



Elegant details





147736

### Bailhandle 3 Comp 14.1"

	39 x 29 x 12
	14 l
	1.0 kg
	26.7 cm/10.5" - 26.6 x 18.3 x 1.5 cm
	35.6 cm/14" - 34 x 24 x 2.4 cm



147737

### Bailhandle 2 Comp 15.6"

	40 x 30 x 10
	14.5 l
	1.0 kg
	26.7 cm/10.5" - 26.6 x 18.3 x 1.5 cm
	39.6 cm/15.6" - 37.5 x 25.9 x 2.8 cm



147733

### Backpack 14.1"

	28 x 38.5 x 11
	13 l
	1.0 kg
	26.7 cm/10.5" - 26.6 x 18.3 x 1.5 cm
	35.6 cm/14" - 34 x 24 x 2.4 cm



147734

### Backpack 15.6"

	28 x 41 x 12.5
	18 l
	1.1 kg
	26.7 cm/10.5" - 26.6 x 18.3 x 1.5 cm
	39.6 cm/15.6" - 37.5 x 25.9 x 2.8 cm



147735

### Backpack W/Flap 14.1"

	28 x 37 x 9
	11.5 l
	1.0 kg
	26.7 cm/10.5" - 26.6 x 18.3 x 1.5 cm
	35.6 cm/14" - 34 x 24 x 2.4 cm



147738

### Tote 14.1"

	40 x 30 x 16
	15 l
	0.9 kg
	26.7 cm/10.5" - 26.6 x 18.3 x 1.5 cm
	35.6 cm/14" - 34 x 24 x 2.4 cm

<b>OPENROAD 2.0</b>		<b>110</b>
<b>VECTURA EVO</b>		<b>112</b>
<b>STACKD BIZ</b>		<b>114</b>
<b>LITEPOINT</b>		<b>116</b>
<b>MYSIGHT</b>		<b>118</b>
<b>DYE-NAMIC</b>	<b>NEW</b>	<b>120</b>
<b>GUARDIT 2.0</b>		<b>122</b>
<b>NETWORK 4</b>		<b>124</b>
<b>SACKSQUARE</b>	<b>NEW</b>	<b>126</b>
<b>SACKMOD</b>	<b>NEW</b>	<b>128</b>
<b>AIRGLOW SLEEVES</b>		<b>131</b>
<b>OPENROAD CHIC 2.0</b>		<b>132</b>
<b>BE-HER</b>		<b>134</b>
<b>WORKATIONIST</b>		<b>136</b>
<b>ECO WAVE</b>		<b>138</b>
<b>ONGOING</b>		<b>140</b>
<b>GUARDIT CLASSY</b>		<b>142</b>
<b>MOVE 4.0</b>		<b>144</b>





BUSINESS  
& BAGS

BUSINESS  
& BAGS

BUSINESS  
& BAGS

**BUSINESS  
& BAGS**

BUSINESS  
& BAGS

BUSINESS  
& BAGS

BUSINESS  
& BAGS

BUSINESS  
& BAGS

The evolution into the 2.0 version with tech features, improved organisation but consistent coolness.

- Double side bottle pockets
- Smart Sleeve, which doubles as security pocket (on Backpacks and Bailhandles only)
- A step forward in terms of accessibility and usability



Black  
1041



Cool Blue  
1971



Metallic logo plate enriches the line with class



USB port to charge devices (battery sold separately)



Water resistant laptop compartment





137211

**Waistbag**

	39 x 14 x 7.5
	3.5 l
	0.3 kg



137205

**Tablet Crossover 7.9"**

	15.5 x 22.5 x 7
	2.5 l
	0.3 kg
	20.3 cm/8\" - 21.6 x 13.5 x 1.4 cm



137206

**Tablet Crossover 9.7"**

	19 x 24 x 8.5
	4 l
	0.4 kg
	24.5 cm/9.7\" - 24 x 17 x 1.3 cm



137210

**Bailhandle 15.6\" EXP\***

	43 x 31 x 13.5/21.5
	20/24 l
	1.4 kg
	26.7 cm/10.5\" - 26.6 x 18.3 x 1.5 cm
	39.6 cm/15.6\" - 37.5 x 25.9 x 2.8 cm



137207

**Laptop Backpack 14.1"**

	29 x 41 x 16
	22.5 l
	1.4 kg
	26.7 cm/10.5\" - 26.6 x 18.3 x 1.5 cm
	35.6 cm/14\" - 34 x 24 x 2.4 cm



137208

**Laptop Backpack 15.6"**

	31 x 43 x 17
	18 l
	1.3 kg
	26.7 cm/10.5\" - 26.6 x 18.3 x 1.5 cm
	39.6 cm/15.6\" - 37.5 x 25.9 x 2.8 cm



137209

**Laptop Backpack 17.3\" + Cloth. Comp\***

	32 x 46 x 19/27
	29.5//34 l
	1.6 kg
	26.7 cm/10.5\" - 26.6 x 18.3 x 1.5 cm
	43.9 cm/17.3\" - 42.2 x 28.7 x 3.8 cm

Essential and smart, featuring a lightweight design and cutting-edge functionality.

- Soft padded touch points, handles and shoulder straps
- Easy Pass™ system which allows to connect devices stored in different compartments
- Smart Sleeve on all models



Black  
1041



USB port to charge devices  
(powerbank sold separately)



Complete interior organisation



Laptop and tablet compartment





Samsonite B...



TURA EVO  
Backpack

BUSINESS & BAGS



123665

### Office Case 15.6"

	41 x 30 x 7
	14 l
	0.9 kg
	26.7 cm/10.5" - 26.6 x 18.3 x 1.5 cm
	39.6 cm/15.6" - 37.5 x 25.9 x 2.8 cm



123669

### Laptop Bailhandle 14.1"

	37 x 27.5 x 7
	10 l
	0.7 kg
	26.7 cm/10.5" - 26.6 x 18.3 x 1.5 cm
	35.6 cm/14" - 34 x 24 x 2.4 cm



123670

### Laptop Bailhandle 15.6"

	41 x 30 x 12
	18 l
	1 kg
	26.7 cm/10.5" - 26.6 x 18.3 x 1.5 cm
	39.6 cm/15.6" - 37.5 x 25.9 x 2.8 cm



123671

### Laptop Bailhandle 17.3"

	44 x 32 x 12
	20.5 l
	1.1 kg
	26.7 cm/10.5" - 26.6 x 18.3 x 1.5 cm
	43.9 cm/17.3" - 42.2 x 28.7 x 3.8 cm



123672

### Laptop Backpack 14.1"

	29 x 41 x 16
	19 l
	0.9 kg
	26.7 cm/10.5" - 26.6 x 18.3 x 1.5 cm
	35.6 cm/14" - 34 x 24 x 2.4 cm



123673

### Laptop Backpack 15.6"

	29 x 44.5 x 18
	22 l
	0.9 kg
	26.7 cm/10.5" - 26.6 x 18.3 x 1.5 cm
	39.6 cm/15.6" - 37.5 x 25.9 x 2.8 cm



LIMITED  
5 year  
WARRANTY

123675

### Rolling Tote 17.3"

	46 x 35 x 20
	27.5 l
	2.8 kg
	26.7 cm/10.5" - 26.6 x 18.3 x 1.5 cm
	43.9 cm/17.3" - 42.2 x 28.7 x 3.8 cm



Born in cross design with the travel line, StackD Biz blink the eye to the modern consumer fitting the emerging trends in terms of look and gender. With the assortment focused on Backpacks, each size has different interpretation in terms of look and functionality.



Black  
1041



Navy  
1596



Forest  
1338



Rose  
1751

- Unisex design
- Exterior fabric and interior lining made from recycled PET bottles, part of our Recyclex™ Material Technology Initiative
- USB port

## MATCHES

STACKD P. 32 AND STACKD TOILET KIT P. 188



RECYCLEX™



Slim easy access front pocket



Top handle integrated into shoulder straps



Cloth compartment on Laptop Backpack 17.3" EXP



\*until stock depletion color Forrest 1338



141470

### Laptop Backpack 14.1"



	30 x 42.5 x 18
	15 l
	1.0 kg
	26.7 cm/10.5" - 26.6 x 18.3 x 1.5 cm
	35.6 cm/14" - 24 x 24 x 2.4 cm



141471

### Laptop Backpack 15.6"



	31.5 x 44 x 18.5
	16.5 l
	1.0 kg
	26.7 cm/10.5" - 26.6 x 18.3 x 1.5 cm
	39.6 cm/15.6" - 37.5 x 25.9 x 2.8 cm



141472

### Laptop Backpack 17.3" EXP\*



	34 x 47 x 21/25.5
	22/30 l
	1.4 kg
	26.7 cm/10.5" - 26.6 x 18.3 x 1.5 cm
	43.9 cm/17.3" - 42.2 x 28.7 x 3.8 cm

## Litepoint is your total mobile workspace into one light Backpack.

- Exterior fabric and interior lining made from recycled PET bottles, part of our Recyclex™ Material Technology Initiative
- Reflective details on the front
- Wide assortment of models



Black  
1041



Grey  
1408



Peacock  
1671



Detailed zipper pullers on reflective zipper



Minimalist approach of the Samsonite logo



Powerbank organisation





Samsonite - Lit...



WITH ON TOP A WATER RESISTANT  
LAPTOP COMPARTMENT  
LITEPOINT

BUSINESS & BAGS



134554

### Waistbag



34 x 15.5 x 7.5



3 l



0.2 kg



134547

### Bailhandle 15.6" EXP



40.5 x 30 x 13/18



17.5/22 l



0.9 kg



26.7 cm/10.5" -  
26.6 x 18.3 x 1.5 cm



39.6 cm/15.6" -  
37.5 x 25.9 x 2.8 cm



134545

### Tablet Crossover 9.7"



20 x 8.5 x 25



4.5 l



0.2 kg



24.5 cm/9.7" -  
24 x 17 x 1.3 cm



134548

### Laptop Backpack 14.1"



28.5 x 40.5 x 11



16 l



0.8 kg



26.7 cm/10.5" -  
26.6 x 18.3 x 1.5 cm



35.6 cm/14" -  
34 x 24 x 2.4 cm



134549

### Laptop Backpack 15.6"



30 x 43 x 13



18 l



0.9 kg



26.7 cm/10.5" -  
26.6 x 18.3 x 1.5 cm



39.6 cm/15.6" -  
37.5 x 25.9 x 2.8 cm



134550

### Laptop Backpack 17.3" EXP



32 x 46 x 18/23



25/31 l



2.4 kg



26.7 cm/10.5" -  
26.6 x 18.3 x 1.5 cm



43.9 cm/17.3" -  
42.2 x 28.7 x 3.8 cm



LIMITED  
5 year  
WARRANTY

134551

### Laptop Backpack/WH 17.3"



32.5 x 48 x 20



30 l



1.3 kg



26.7 cm/10.5" -  
26.6 x 18.3 x 1.5 cm



43.9 cm/17.3" -  
42.2 x 28.7 x 3.8 cm



**High-tech & lightweight design with smart organisation, in an eco-friendly body exterior.**

- Exterior fabric made from recycled PET bottles, part of our Recyclex™ Material Technology Initiative
- Detachable pen pouch with Velcro fastening
- Smart Sleeve, comfortable padded handles and shoulder straps on all models
- Small colourful details for a modern touch



Black  
1041



Blue  
1090



USB port on all models



Removable pen pouch



Laptop and tablet compartment



\*until stock depletion color Blue 1090



135074

**Laptop Bailhandle 14.1"\***

	38 x 27.5 x 7
	8.5 l
	0.6 kg
	26.7 cm/10.5" - 26.6 x 18.3 x 1.5 cm
	35.6 cm/14" - 34 x 24 x 2.4 cm



135075

**Laptop Bailhandle 15.6"**

	42 x 30 x 10.5
	12.5 l
	0.7 kg
	26.7 cm/10.5" - 26.6 x 18.3 x 1.5 cm
	39.6 cm/15.6" - 37.5 x 25.9 x 2.8 cm



135070

**Laptop Backpack 14.1"**

	28 x 40 x 13.5
	16.5 l
	0.9 kg
	26.7 cm/10.5" - 26.6 x 18.3 x 1.5 cm
	35.6 cm/14" - 34 x 24 x 2.4 cm



135071

**Laptop Backpack 15.6"**

	30 x 43 x 16
	19 l
	0.9 kg
	26.7 cm/10.5" - 26.6 x 18.3 x 1.5 cm
	39.6 cm/15.6" - 37.5 x 25.9 x 2.8 cm



135072

**Laptop Backpack 17.3"\***

	32 x 46 x 17.5
	25.5 l
	1.1 kg
	26.7 cm/10.5" - 26.6 x 18.3 x 1.5 cm
	43.9 cm/17.3" - 42.2 x 28.7 x 3.8 cm


**LIMITED**  
**5**  
**year**  
**WARRANTY**

135073

**Laptop Backpack/WH 17.3"**

	32.5 x 48 x 18.5
	25.5 l
	2.4 kg
	26.7 cm/10.5" - 26.6 x 18.3 x 1.5 cm
	43.9 cm/17.3" - 42.2 x 28.7 x 3.8 cm

Our new line with a stylish and modern design playing with innovative shapes and keeping a genderless feeling. Made of eco materials, organised and functional.

- Rounded shape and soft structure
- Business organisation and separated laptop compartment
- Wide color offer



Black  
1041



Blue  
1090



Foliage Green  
3869



Grape Purple  
B102



New TPU logo



Clothes compartment on Backpack L 17.3"



Reflective details





146465

**Waistbag**

	39 x 14 x 7
	3 l
	0.2 kg



146457

**Backpack S 14.1"**

	26 x 42 x 15
	16 l
	0.6 kg
	26.7 cm/10.5" - 26.6 x 18.3 x 1.5 cm
	35.6 cm/14" - 34 x 24 x 2.4 cm



146459

**Backpack M 15.6"**

	28 x 45 x 18
	20.5 l
	0.7 kg
	26.7 cm/10.5" - 26.6 x 18.3 x 1.5 cm
	39.6 cm/15.6" - 37.5 x 25.9 x 2.8 cm



146460

**Backpack L 17.3"**

	31 x 48 x 19.5
	24 l
	0.9 kg
	26.7 cm/10.5" - 26.6 x 18.3 x 1.5 cm
	43.9 cm/17.3" - 42.2 x 28.7 x 3.8 cm



146464

**Messenger Bag 14.1"**

	38.5 x 30.5 x 11
	15 l
	0.6 kg
	26.7 cm/10.5" - 26.6 x 18.3 x 1.5 cm
	35.6 cm/14" - 34 x 24 x 2.4 cm

The convenience of an everyday laptop-carrying bag, with a sleek and professional look.

- Interesting mix of 2 different Polyester materials
- Service pocket with soft-touch lining for sunglasses, tickets and other small essentials
- Redesigned interior organisation to better suit the latest electronic devices



Black  
1041



Blue  
1090

## MATCHES

GUARDIT CLASSY P. 142



115325

### Office Case 15.6"

	40 x 30 x 9
	16 l
	0.7 kg
	26.7 cm/10.5" - 26.6 x 18.3 x 1.5 cm
	39.6 cm/15.6" - 37.5 x 25.9 x 2.8 cm



115326

### Bailhandle 13.3"\*

	34.5 x 24.5 x 8.5
	9.5 l
	0.4 kg
	26.7 cm/10.5" - 26.6 x 18.3 x 1.5 cm
	33.8 cm/ 13.3" - 32.5 x 22.9 x 2 cm



115327

### Bailhandle 15.6"

	40 x 30 x 9
	14.5 l
	0.5 kg
	26.7 cm/10.5" - 26.6 x 18.3 x 1.5 cm
	39.6 cm/15.6" - 37.5 x 25.9 x 2.8 cm

Smart Sleeve in all items



\*until stock depletion color Blue 1090



115328

**Bailhandle 17.3"**

	43 x 32 x 10
	18.5 l
	0.6 kg
	26.7 cm/10.5" - 26.6 x 18.3 x 1.5 cm
	43.9 cm/17.3" - 42.2 x 28.7 x 3.8 cm



115329

**Laptop Backpack S  
14.1"**

	29 x 40 x 18
	17.5 l
	0.7 kg
	26.7 cm/10.5" - 26.6 x 18.3 x 1.5 cm
	35.6 cm/14" - 34 x 24 x 2.4 cm



115330

**Laptop Backpack M  
15.6"**

	30 x 44 x 20
	22.5 l
	0.7 kg
	26.7 cm/10.5" - 26.6 x 18.3 x 1.5 cm
	39.6 cm/15.6" - 37.5 x 25.9 x 2.8 cm



115331

**Laptop Backpack L  
17.3"**

	32 x 48 x 20.5
	27.5 l
	0.8 kg
	26.7 cm/10.5" - 26.6 x 18.3 x 1.5 cm
	43.9 cm/17.3" - 42.2 x 28.7 x 3.8 cm


**LIMITED  
5 year  
WARRANTY**

115333

**Laptop Backpack/WH  
15.6"**

	33.5 x 48 x 20
	29 l
	2.2 kg
	26.7 cm/10.5" - 26.6 x 18.3 x 1.5 cm
	39.6 cm/15.6" - 37.5 x 25.9 x 2.8 cm


**LIMITED  
5 year  
WARRANTY**

115332

**Rolling Tote 17.3"**

	45 x 33 x 18
	26.5 l
	2.7 kg
	26.7 cm/10.5" - 26.6 x 18.3 x 1.5 cm
	43.9 cm/17.3" - 42.2 x 28.7 x 3.8 cm

Our iconic Samsonite tech line featuring a modern and minimal look. Functionality, aggressive price point and Eco material make Network 4 a must have.

- Modern design
- Interior and exterior lining made from recycled PET bottles, part of our Recyclen™ Material Technology Initiative
- Lightness to increase the comfort



Charcoal Black  
6551



Space Blue  
1820



Metallic logo plate enriches the look



Colour contrast details as distinctive signature



Dedicated laptop and tablet compartment





142306

## Bailhandle 14.1"

	35.8 x 28.5 x 10.5
	11 l
	0.7 kg
	26.7 cm/10.5" - 26.6 x 18.3 x 1.5 cm
	35.6 cm/14" - 34 x 24 x 2.4 cm



142307

## Bailhandle 15.6"

	42.5 x 30.5 x 11
	15.5 l
	0.7 kg
	26.7 cm/10.5" - 26.6 x 18.3 x 1.5 cm
	39.6 cm/15.6" - 37.5 x 25.9 x 2.8 cm



142309

## Laptop Backpack 14.1"

	28 x 40.5 x 19
	5.5 l
	0.7 kg
	26.7 cm/10.5" - 26.6 x 18.3 x 1.5 cm
	35.6 cm/14" - 34 x 24 x 2.4 cm



142310

## Laptop Backpack 15.6"

	31 x 43.5 x 19.5
	20.5 l
	0.8 kg
	26.7 cm/10.5" - 26.6 x 18.3 x 1.5 cm
	39.6 cm/15.6" - 37.5 x 25.9 x 2.8 cm



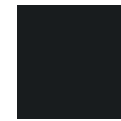
142311

## Laptop Backpack 17.3"

	32.5 x 46 x 21
	25 l
	1.0 kg
	26.7 cm/10.5" - 26.6 x 18.3 x 1.5 cm
	43.9 cm/17.3" - 42.2 x 28.7 x 3.8 cm

A facelift for our Hip Line featuring a new and trendy shape: The Slingbag. The line approaches the classical businessman looking for an everyday bag that will also match their looks.

- Recycled PET and Polyurethane body with a squared Samsonite logo
- New Sling design with internal organisation and Clutch design with internal organisation and handle
- Different crossover sizes and designs with internal organisation



Black  
1041



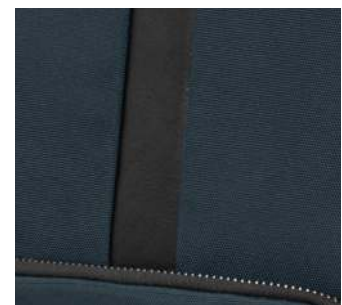
Blue  
1090



Water bottle pocket on Slingbag



PU details



New square logo





146477  
**Waist Bag**

	39 x 14 x 7
	2.5 l
	0.2 kg



146474  
**Crossover S 7.9"**

	15.5 x 22 x 4.5
	2 l
	0.3 kg
	20.3 cm/8" - 21.6 x 13.5 x 1.4 cm



146475  
**Crossover M 9.7"**

	19 x 24 x 5.5
	4 l
	0.3 kg
	24.5 cm/9.7" - 24 x 17 x 1.3 cm



146476  
**Slingbag M**

	20 x 37 x 9.5
	4.5 l
	0.4 kg
	26.7 cm/10.5" - 26.6 x 18.3 x 1.5 cm



146478  
**Travel Clutch**

	21.5 x 14 x 4.5
	1.5 l
	0.2 kg

Born in the era of hands-free mobility, the line is characterised by a new concept of waist bags and crossovers for the man always on the go and aiming to reach a younger consumer.

- Recycled PET and metal hardware with new TPU logo
- Different crossover sizes and designs with internal organisation
- New Sling design with internal organisation



Black  
1041



Foliage Green  
3869



Double access on Slingbag for both right and left-handed



TPU logo



Modern look thanks to the strap details on front





146462  
**Slingbag M**

	20 x 39 x 5.5
	4 l
	0.4 kg
	26.7 cm/10.5" - 26.6 x 18.3 x 1.5 cm



146463  
**Waist Bag**

	27 x 13.5 x 5.5
	2 l
	0.3 kg



146458  
**Crossover S 7.9"**

	15.5 x 22 x 4.5
	2.5 l
	0.3 kg
	20.3 cm/8" - 21.6 x 13.5 x 1.4 cm



146461  
**Crossover M 9.7"**

	19 x 24 x 5.5
	4 l
	0.3 kg
	24.5 cm/9.7" - 24 x 17 x 1.3 cm



Super soft sleeves range offering a convenient way to protect and transport a tablet, netbook or laptop.

- Outer pockets store smaller valuable items
- Choice of bold accent colours



Black/Red  
1073



Black/Blue  
2642



46749

## Laptop Sleeve 13.3"



	33.5 x 25 x 5
	2.5 l
	0.3 kg
	33.8 cm/ 13.3" - 32.5 x 22.9 x 2 cm



78145

## Laptop Sleeve New 14.1"



	36 x 26 x 6
	4 l
	0.3 kg
	35.6 cm/14" - 34 x 24 x 2.4 cm



46123

## Laptop Sleeve 15.6"



	40 x 30.5 x 5
	4.5 l
	0.4 kg
	39.6 cm/15.6" - 37.5 x 25.9 x 2.8 cm

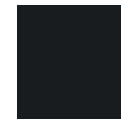
# OPENROAD CHIC 2.0™

B997

Even more classy and contemporary, the 2.0 version has a new design and feminine details!

An improved organisation plus USB port complete our beloved urban range!

- A step forward in terms of accessibility and usability
- Double side bottle pockets
- Samsonite logo plate



Black  
1041



Pearl Lilac  
2274



Improved accessibility  
and top pocket



USB port & water resistant  
laptop compartment



Feminine logo plate  
and cool zipper pullers





139458  
**Waistbag**

	32 x 13.5 x 9
	2 l
	0.2 kg



139457  
**Slim Bailhandle 15.6"**

	41 x 31.5 x 11.5
	11.5 l
	0.9 kg
	26.7 cm/10.5" - 26.6 x 18.3 x 1.5 cm
	39.6 cm/15.6" - 37.5 x 25.9 x 2.8 cm



139459  
**Backpack 13.3"**

	30.5 x 40 x 18.5
	13.5 l
	1.2 kg
	26.7 cm/10.5" - 26.6 x 18.3 x 1.5 cm
	33.8 cm/13.3" - 32.5 x 22.9 x 2 cm



139460  
**Backpack 14.1"**

	32.5 x 44 x 21.5
	19 l
	1.3 kg
	26.7 cm/10.5" - 26.6 x 18.3 x 1.5 cm
	35.6 cm/14" - 34 x 24 x 2.4 cm

The combination of lady's Handbags and business products make Be-Her the perfect item throughout the day. Light and comfortable without forgetting functionality and sustainability.

- Exterior fabric and interior lining made from recycled PET bottles, part of our Recyclex™ Material Technology Initiative
- Distinctive metal plate logo
- Feminine details



Black  
1041



Antique Pink  
5055



Petrol Grey  
6325



RECYCLEX™



144365

## Shoulder bag XS

	21 x 14 x 8
	2.5 l
	0.3 kg



144364

## Horiz. Shoulder bag M 3 Comp

	28.5 x 19.5 x 12.5
	7 l
	0.4 kg

### Side bottle pocket



### Internal organisation



### Separated laptop compartment





144367

## Bucket bag M

	28.5 x 28.5 x 13
	9.5 l
	0.6 kg



144370

## Backpack S

	20.5 x 30 x 10.5
	7.5 l
	0.5 kg



144371

## Backpack 14.1"

	26.5 x 38 x 10
	14 l
	0.7 kg
	26.7 cm/10.5" - 26.6 x 18.3 x 1.5 cm
	35.6 cm/14" - 34 x 24 x 2.4 cm



144373

## Backpack 15.6"

	28 x 40 x 13.5
	18 l
	0.8 kg
	26.7 cm/10.5" - 26.6 x 18.3 x 1.5 cm
	39.6 cm/15.6" - 37.5 x 25.9 x 2.8 cm



144375

## Tote 15.6"

	39 x 29 x 14
	15 l
	0.9 kg
	26.7 cm/10.5" - 26.6 x 18.3 x 1.5 cm
	39.6 cm/15.6" - 37.5 x 25.9 x 2.8 cm



144378

## Shopping bag 14.1"

	38 x 29 x 14
	14 l
	0.8 kg
	26.7 cm/10.5" - 26.6 x 18.3 x 1.5 cm
	35.6 cm/14" - 34 x 24 x 2.4 cm

Explore new horizons and enjoy your vacation even if you are working: Workationist will be your loyal ally with its comfort and functional features in a urban & minimalistic Backpack!

- Exterior fabric and interior lining made from recycled PET bottles, part of our Recyclex™ Material Technology Initiative
- Water resistant laptop compartment & USB port
- Quick access pockets, one water resistant with PEVA lining



Black  
1041



Blueberry  
1120



Quartz  
1721



Dedicated charm



Refined zipper pullers & feminine logo plate



New way for icons





142613

### Shoulder bag + flap\*



	28 x 19 x 10
	4.5 l
	0.4 kg



142615

### Tote 13.3"\*



	34 x 25 x 14
	12 l
	0.9 kg
	26.7 cm/10.5" - 26.6 x 18.3 x 1.5 cm
	33.8 cm/13.3" - 32.5 x 22.9 x 2 cm



142616

### Tote 14.1"



	38 x 29 x 14
	17 l
	0.9 kg
	26.7 cm/10.5" - 26.6 x 18.3 x 1.5 cm
	35.6 cm/14" - 34 x 24 x 2.4 cm



142617

### Bailhandle 15.6"



	40 x 29 x 9.5
	12 l
	0.9 kg
	26.7 cm/10.5" - 26.6 x 18.3 x 1.5 cm
	39.6 cm/15.6" - 37.5 x 25.9 x 2.8 cm



142619

### Backpack 14.1"



	26 x 40 x 14.5
	14 l
	0.9 kg
	26.7 cm/10.5" - 26.6 x 18.3 x 1.5 cm
	35.6 cm/14" - 34 x 24 x 2.4 cm



142620

### Backpack 15.6" + CL. COMP



	28 x 43 x 16.5
	17.5 l
	1.2 kg
	26.7 cm/10.5" - 26.6 x 18.3 x 1.5 cm
	39.6 cm/15.6" - 37.5 x 25.9 x 2.8 cm

A light, comfortable and eco line that combines a contemporary and minimalist design.

- Exterior fabric made from recycled PET bottles, part of our Recyclax™ Material Technology Initiative
- Shiny Nickel hardware
- Business organisation
- Samsonite logo embossed on metal plate



Black  
1041



Midnight Blue  
1549



Stone Grey  
1830



Separated laptop compartment



Quick Access pocket



Smart Sleeve to stack your bag on your suitcase





130662

### Bailhandle 15.6"

	39 x 29 x 7
	10 l
	0.5 kg
	26.7 cm/10.5" - 26.6 x 18.3 x 1.5 cm
	39.6 cm/15.6" - 37.5 x 25.9 x 2.8 cm



130663

### Bailhandle 15.6" 2 Comp

	39 x 29 x 11
	15.5 l
	0.7 kg
	26.7 cm/10.5" - 26.6 x 18.3 x 1.5 cm
	39.6 cm/15.6" - 37.5 x 25.9 x 2.8 cm



130664

### Backpack 14.1"

	29 x 40 x 7
	12.5 l
	0.6 kg
	26.7 cm/10.5" - 26.6 x 18.3 x 1.5 cm
	35.6 cm/14" - 34 x 24 x 2.4 cm



130666

### Backpack 15.6"

	33 x 43 x 15
	19 l
	0.8 kg
	26.7 cm/10.5" - 26.6 x 18.3 x 1.5 cm
	39.6 cm/15.6" - 37.5 x 25.9 x 2.8 cm

The perfect balance of simplicity and attention to details. Linear shapes, sober look and eco materials are the winning elements of Ongoing, suitable for everyday adventures while commuting to work.

- Interior lining made from recycled PET bottles, part of our Recyclex™ Material Technology Initiative
- The exterior fabric is made out of recycled nylon coming from post-industrial waste
- Quick access pockets
- Samsonite printed logo



Black  
1041



Olive Green  
1635



Petrol Grey  
6325



Light Plum  
7819



RECYCLEX™



Side bottle pocket



Separated laptop compartment



Top pocket





Samsonite On... :



BUSINESS & BAGS



144759

### Daily Backpack

	25 x 35 x 15
	11.5 l
	0.5 kg



144758

### Backpack 14.1"

	28 x 37.5 x 14
	14.5 l
	0.7 kg
	26.7 cm/10.5" - 26.6 x 18.3 x 1.5 cm
	35.6 cm/14" - 34 x 24 x 2.4 cm



144760

### Backpack 15.6"

	29.5 x 41 x 15
	17 l
	0.8 kg
	26.7 cm/10.5" - 26.6 x 18.3 x 1.5 cm
	39.6 cm/15.6" - 37.5 x 25.9 x 2.8 cm



144761

### Bailhandle 15.6"

	40 x 29 x 9
	10.5 l
	0.7 kg
	26.7 cm/10.5" - 26.6 x 18.3 x 1.5 cm
	39.6 cm/15.6" - 37.5 x 25.9 x 2.8 cm



144762

### Bailhandle 15.6" 2 comp

	40 x 29 x 13
	15 l
	0.8 kg
	26.7 cm/10.5" - 26.6 x 18.3 x 1.5 cm
	39.6 cm/15.6" - 37.5 x 25.9 x 2.8 cm



144763

### Duffle

	45 x 36 x 22
	35.5 l
	0.7 kg



144764

### Messenger 13.3"

	36 x 25 x 11.25
	11 l
	0.7 kg
	26.7 cm/10.5" - 26.6 x 18.3 x 1.5 cm
	33.8 cm/13.3" - 32.5 x 22.9 x 2 cm

If eco materials and minimalistic design are all you care about, this is the perfect line for you!

- Business organisation
- Exterior fabric and interior lining made from recycled PET bottles, part of our Recyclex™ Material Technology Initiative
- Shiny nickel finishing hardware
- Feminine pullers

## MATCHES

GUARDIT 2.0 P. 122



Black  
1041



Midnight Blue  
1549



Stone Grey  
1830



Separated laptop compartment



Padded back panel



Internal organisation





# Samsonite Guardit Classy - ...



19

FABRIC AND LINING MADE FROM RECYCLED RPET BOTTLES

BUSINESS & BAGS



139467

## Bailhandle 15.6"

	40 x 30 x 10
	11.5 l
	0.6 kg
	26.7 cm/10.5" - 26.6 x 18.3 x 1.5 cm
	39.6 cm/15.6" - 37.5 x 25.9 x 2.8 cm



139468

## Backpack 14.1"

	29 x 40 x 18
	17.5 l
	0.7 kg
	26.7 cm/10.5" - 26.6 x 18.3 x 1.5 cm
	35.6 cm/14" - 34 x 24 x 2.4 cm



139469

## Backpack 15.6"

	33 x 43 x 15
	19 l
	0.8 kg
	26.7 cm/10.5" - 26.6 x 18.3 x 1.5 cm
	39.6 cm/15.6" - 37.5 x 25.9 x 2.8 cm

The multi-pocket organisation is the best way to keep everything organised. Extremely light, easily foldable and also washable, Move 4.0 is the perfect line to carry with you wherever you want.

- Shiny nickel hardware and puller
- Outside multi-pocket organisation
- Samsonite lettering metal logo with rivets
- Interior lining and zippers made from recycled PET bottles, part of our Recyclex™ Material Technology Initiative



Black  
1041



Dark Blue  
1247



**NEW**

Light Taupe  
0414



RECYCLEX™  
Material Technology Initiative

Internal organisation



Samsonite lettering metal logo with rivets



Side pocket





144718

**Reporter bag**

28.5 x 21 x 10

7 l

0.4 kg



144719

**Horizontal Shoulder Bag + Flap**

30 x 20 x 10.5

5.5 l

0.4 kg



144720

**Shoulder Bag S + 1 Pocket**

27 x 23 x 13

7 l

0.3 kg



144721

**Shoulder Bag M + 2 Pockets**

33 x 27 x 12

12 l

0.4 kg



144722

**Backpack S**

24.5 x 29 x 11

8 l

0.4 kg



144723

**Backpack**

27 x 35 x 12

12 l

0.4 kg

**NEW**

146342

**Backpack 13.3"**

26.5 x 38 x 12.5

13.5 l

0.6 kg

26.7 cm/10.5" - 26.6 x 18.3 x 1.5 cm

33.8 cm/13.3" - 32.5 x 22.9 x 2 cm



144725

**Waistbag S**

32 x 14 x 6

2 l

0.3 kg



<b>DREAM2GO</b>	<b>NEW</b>	<b>148</b>
<b>DREAM2GO DISNEY</b>	<b>NEW</b>	<b>150</b>
<b>HAPPY SAMMIES ECO</b>		<b>152</b>
<b>HAPPY SAMMIES</b>		<b>156</b>
<b>MARVEL ULTIMATE 2.0 - SPIDER-MAN</b>		<b>158</b>
<b>DISNEY ULTIMATE 2.0 - MINNIE GLITTER</b>		<b>159</b>
<b>DISNEY ULTIMATE 2.0 - MICKEY AND DONALD STARS</b>		<b>160</b>
<b>DISNEY ULTIMATE 2.0 - CARS</b>	<b>NEW</b>	<b>161</b>
<b>DISNEY ULTIMATE 2.0 - FROZEN</b>		<b>162</b>





KIDS &  
LICENSES  
KIDS &  
LICENSES  
KIDS &  
LICENSES  
KIDS &  
LICENSES  
KIDS &  
LICENSES  
**KIDS &  
LICENSES**  
KIDS &

Dream2Go, the ride-on friend, is always at your side for all your holidays, sleepovers and playtime at home. Perfect to keep kids entertained and parents carefree while travelling.

- Made in Europe
- Shells made from at least 70% post-consumer recycled Polypropylene waste
- Lightweight
- Spacious interior compartments with cross ribbons
- Leash that can be pulled and used as a shoulder strap or to secure the case at check-in



Tiger T.  
7259



Puppy P.  
9568



Giraffe G.  
9955



Dinosaur D.  
9956



School Bus  
9957



Ice Cream Van  
9958



Motorbike  
9959

LIMITED  
5 year  
WARRANTY



RECYCLEX™



Durable wheels



2-point fixed lock to secure your belongings



Easy-to-grab webbing handles





145033

**Ride-on Suitcase**

52 x 38 x 21



30 l



2.1 kg



Dream2Go, the ride-on friend, is now available in your beloved Disney characters. Perfect to keep kids entertained and parents carefree while travelling.

- Made in Europe
- Shells made from at least 70% post-consumer recycled Polypropylene waste
- Lightweight
- Spacious interior compartments with cross ribbons
- Leash that can be pulled and used as a shoulder strap or to secure the case at check-in



Frozen  
4427



Minnie Glitter  
7064



Mickey Stars  
9548



Cars  
4429

LIMITED  
5 year  
WARRANTY



RECYCLEX™



Durable wheels



2-point fixed lock to secure your belongings



Easy-to-grab webbing handles





145048

### Ride-on Suitcase Disney



52 x 38 x 21



30 l



2.1 kg



The Happy Sammies Eco family, made out of Recycllex™, embrace the cute companions of your kids.

- Lifestyle approach with unique 3D details
- Sternum straps & ergonomic Backpack straps with reflective strips
- ID tag
- Lifestyle Sammies logo patch



Ladybug Lally  
9676



Lion Lester  
9674



Penguin Peter  
9675



Raccoon Remy  
8734



RECYCLEX™



142477

### Toilet Kit Ladybug Lally

	22 x 14 x 9
	2.5 l
	0.1 kg



142478

### Backpack S Ladybug Lally

	24 x 27.5 x 14.5
	7.5 l
	0.2 kg



142476

### Backpack S+ Ladybug Lally

	26 x 32 x 15
	11 l
	0.2 kg



142475

### Upright 45 Ladybug Lally

	36 x 45 x 18
	23 l
	1.6 kg



142469  
**Toilet Kit Lion Lester**

	22 x 14 x 9
	2.5 l
	0.1 kg



142470  
**Backpack S Lion Lester**

	24 x 27.5 x 14.5
	7.5 l
	0.2 kg



142431  
**Backpack S+ Lion Lester**

	26 x 32 x 15
	11 l
	0.2 kg



142430  
**Upright 45 Lion Lester**

	36 x 45 x 18
	23 l
	1.6 kg



142473  
**Toilet Kit  
Penguin Peter**

	22 x 14 x 9
	2.5 l
	0.1 kg



142474  
**Backpack S  
Penguin Peter**

	24 x 27.5 x 14.5
	7.5 l
	0.2 kg



142472  
**Backpack S+  
Penguin Peter**

	26 x 32 x 15
	11 l
	0.2 kg



142471  
**Upright 45  
Penguin Peter**

	36 x 45 x 18
	23 l
	1.6 kg



132081

**Toilet Kit  
Raccoon Remy**

	22 x 14 x 9
	2.5 l
	0.1 kg



132082

**Backpack S  
Raccoon Remy**

	24 x 27.5 x 14.5
	7.5 l
	0.2 kg



132079

**Backpack S+  
Raccoon Remy**

	26 x 32 x 15
	11 l
	0.2 kg



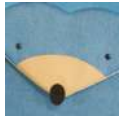
132078

**Upright 45  
Raccoon Remy**

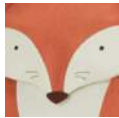
	36 x 45 x 18
	23 l
	1.6 kg

Dream away with our original lifestyle collection in a variety of cute animal characters!

- Cute, character-themed zipper puller on upright & toilet kit
- Lifestyle approach with unique 3D details
- Sternum straps & ergonomic Backpack straps with reflective strip
- ID tag



Hedgehog Harris  
7734



Fox William  
6562



*Sammies*  
by Samsonite



93445

### Toilet Kit Fox William

	21.5 x 13 x 8
	2 l
	0.1 kg



93444

### Backpack S Fox William

	24 x 27.5 x 14
	7.5 l
	0.2 kg






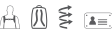
93431

### Upright 45 Fox William

	36 x 45 x 17.5
	24 l
	1.6 kg






120318  
**Backpack S Hedgehog Harris**

	24 x 28 x 14
	7 l
	0.2 kg
	



120322  
**Backpack S+ Hedgehog Harris**

	28 x 34 x 15
	11 l
	0.2 kg
	



120319  
**Upright 45 Hedgehog Harris**

	35 x 45 x 19
	23 l
	1.6 kg
	

With the MARVEL Ultimate 2.0 Spider-Man collection, kids will be all set to embark on great travel adventures!

- Towel embroidery Spider-Man details on all bags
- Themed zipper pullers and embossed character on the Spinner
- ID tags on all bags



Spider-Man  
5059



© Disney  
© MARVEL



131856  
**Spinner 45 MARVEL**

	33 x 45 x 20
	23.5 l
	1.7 kg



131853  
**Backpack S MARVEL**

	23.5 x 28.5 x 13.5
	7 l
	0.3 kg



131854  
**Backpack S+ MARVEL**

	26 x 35 x 15
	11 l
	0.3 kg



131855  
**Backpack M MARVEL**

	30 x 42 x 16
	16 l
	0.4 kg

Minnie fans will be delighted with our Disney Ultimate 2.0 Minnie Glitter collection for 3 to 6 year-olds.

- 3D design: glittery Minnie bow and felt ears on the backpack
- Winning combination of pink with white polka dots
- Embossed Minnie on the Spinner
- Forms a matching set with the Minnie Glitter Dream2Go Disney ride-on



Minnie Glitter  
7064

Disney

© Disney



106711

### Spinner 46 Disney

	32 x 46.5 x 23
	20.5 l
	1.7 kg



106708

### Backpack S+ Disney

	22 x 35 x 14.5
	11.5 l
	0.2 kg



106707

### Backpack S Disney

	23.5 x 28.5 x 13.5
	7 l
	0.2 kg

S-shaped shoulder straps and sternum straps



Mickey and Donald are ready to join the Disney Ultimate 2.0 collection in a dreaming starry version.

- Donald's hat and Mickey's ears are made out of embroidered soft fleece adding a playful touch to the collection
- Themed zipper pullers and embossed character on the Spinner
- ID tags on all bags
- Forms a matching set with the Dream2Go Disney ride-on

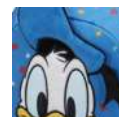
Disney

© Disney

Disney  
**MICKEY**  
AND FRIENDS



Mickey Stars  
9548



Donald Stars  
9549



Mickey and Donald Stars  
9550



140110  
**Spinner 46\***

	33 x 46.5 x 22.5
	20.5 l
	1.7 kg



140106  
**Backpack S**

	23.5 x 28.5 x 13.5
	7 l
	0.3 kg



140108  
**Backpack S+**

	26 x 35 x 15
	11 l
	0.3 kg



140111  
**Backpack S**

	23.5 x 28.5 x 13.5
	7 l
	0.3 kg



140113  
**Backpack S+**

	26 x 35 x 15
	11 l
	0.3 kg

\*only available in colour 9550

Your kids will cross the finish line speeding into their adventures alongside the invincible Lightning Mc Queen!

- Themed zipper puller
- Backpacks are completely made from Recycled PET fabric (exterior fabric & interior lining)
- Interior lining made from RPET fabric on Spinner 45
- Forms a matching set with the Dream2Go Disney ride-on



148045

### Spinner 45 Disney

	33 x 45 x 20
	23.5 l
	1.7 kg



148043

### Backpack S

	23.5 x 28.5 x 13.5
	7 l
	0.3 kg



148044

### Backpack S+

	26 x 35 x 15
	11 l
	0.3 kg

Cars  
4429

© Disney



© Disney/Pixar

RECYCLEX™  
ADVANCED TECHNOLOGY

Rubberised puller



Embroidery patches



Flag print on zipper raincover



Anna, Elsa and the most cuddly Olaf are ready to join the Disney Ultimate 2.0 family to accompany your kids during their magic daily adventures.

- Themed zipper pullers
- Embossed characters on the Spinner
- Forms a matching set with the Frozen Dream2Go Disney ride-on
- Backpacks are completely made by Recycled PET (Recyclex™) fabric (exterior fabric & lining)
- Interior lining made from Recycled PET fabric on Spinner 45



Frozen  
4427



recyclex™



Disney Frozen logo patch







Rubberised snowflake puller





145740





**Backpack S**  
**Disney Frozen**

	23.5 x 28.5 x 13.5
	7 l
	0.3 kg
	



145742





**Backpack S+**  
**Disney Frozen**

	26 x 35 x 15
	11 l
	0.3 kg
	



145743

**Spinner 46**  
**Disney Frozen**

	33 x 46.5 x 22.5
	20.5 l
	1.7 kg
	

**ALU DROP S**  
**RAIN PRO**  
**WOOD CLASSIC S**

**166**  
**168**  
**170**

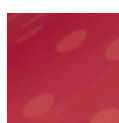




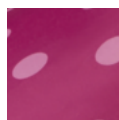
UMBRELLAS  
UMBRELLAS  
UMBRELLAS  
UMBRELLAS  
UMBRELLAS  
UMBRELLAS  
UMBRELLAS  
UMBRELLAS  
UMBRELLAS  
UMBRELLAS  
UMBRELLAS  
UMBRELLAS  
UMBRELLAS  
UMBRELLAS  
UMBRELLAS  
UMBRELLAS  
UMBRELLAS  
UMBRELLAS  
UMBRELLAS  
**UMBRELLAS**  
UMBRELLAS  
UMBRELLAS  
UMBRELLAS

A line with a wide assortment of styles and colours for every kind of use and taste.

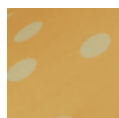
- Lightness thanks to the aluminium construction
- Largest assortment of colours and models in our category



Sunset Red Polka Dots\*  
9683



Violet Pink Polka Dots\*  
9684



Yellow Polka Dots\*  
9685



Black  
1041



Indigo Blue  
1439



Tomato  
1868



**NEW**  
Beige Check  
9681



**NEW**  
Lavender Check  
A024



**NEW**  
Petrol Green Check  
A025



Raspberry Rose\*  
6264



**NEW**  
Turquoise  
1879



**NEW**  
Yellow  
1924



**NEW**  
Dark Pink  
6898



**NEW**  
Grass Green  
1385



**NEW**  
Dark Pink/Grass Green  
A023

**NEW**



146303

**Stick Lady Auto Open**

87 cm

0.42 kg

Ø 103 cm

AUTO O/C

1

NO

YES



108963

**4 Sect. Auto O/C**

20.5 cm

0.28 kg

Ø 89 cm

AUTO O/C

4

NO

YES



108962

**3 Sect. Manual Flat**

☞ 23 cm    📦 0.16 kg  
Ø 94.5 cm    🛠 MANUAL  
📏 3    🌧 YES  
☔ YES



108965

**3 Sect. Auto O/C slim**

☞ 26 cm    📦 0.24 kg  
Ø 95 cm    🛠 AUTO O/C  
📏 3    🌧 NO  
☔ YES



108966

**Safe 3 Sect. Auto O/C**

☞ 28.5 cm    📦 0.31 kg  
Ø 98 cm    🛠 SAFE  
              AUTO O/C  
📏 3    🌧 NO  
☔ YES



108960










**Stick Man Auto Open**

☞ 96 cm    📦 0.48 kg  
Ø 115 cm    🛠 AUTO O  
📏 1    🌧 YES  
☔ YES



Unisex range at entry price level for practical and easy use.

- Functional design and construction
- Fabric with teflon coating
- Samsonite logo on the handle and pouch

	Black 1041		Light Plum 7819
	Blue 1090		Orange 1641
	Pistachio Green* 0588		Jeans* 1459
	Burnt Orange* 1156		
	Violet Pink* E457		





56159

**3 Sect. Auto O/C**

- ↔ 28.5 cm
- ⬮ 0.31 kg
- ⌀ 98 cm
- ⬮ AUTO O/C
- ⬮ 3
- ⬮ YES
- ⬮ YES



56161

**Stick Umbrella**

- ↔ 87 cm
- ⬮ 0.42 kg
- ⌀ 103 cm
- ⬮ AUTO O
- ⬮ 1
- ⬮ YES
- ⬮ YES

A classic line, for those that love traditional wooden umbrellas.

- Subtle logo on pouch and canopy
- Solid shaft and frame
- Classic black colour and new check print
- Plastic handle on new check print



Black  
1041



108979

### 3 Sect. Auto O/C Short

Stipe 27 cm

0.3 kg

Ø 97 cm

AUTO O/C

3

YES

YES

Wooden handle





108978

**3 Sect. Auto O/C Crook**

☞ 33 cm

📦 0.35 kg

Ø 97 cm

🔧 AUTO O/C

📏 3

☔ YES

☔ YES



108980

**Stick Man Auto Open**

☞ 97.5 cm

📦 0.5 kg

Ø 120 cm

🔧 AUTO O

📏 1

☔ YES

☔ YES

<b>PACK-SIZED</b>	<b>174</b>
<b>GLOBAL TRAVEL ACCESSORIES</b>	
- <b>LUGGAGE ACCESSORIES</b>	<b>176</b>
- <b>PACKING ACCESSORIES</b>	<b>178</b>
- <b>COMFORT TRAVELLING</b>	<b>180</b>
- <b>ELECTRONIC ACCESSORIES</b>	<b>182</b>



ACCESSORIES  
ACCESSORIES  
ACCESSORIES  
ACCESSORIES  
ACCESSORIES  
ACCESSORIES  
ACCESSORIES  
ACCESSORIES  
ACCESSORIES  
ACCESSORIES  
ACCESSORIES  
ACCESSORIES  
ACCESSORIES  
ACCESSORIES  
ACCESSORIES  
ACCESSORIES  
ACCESSORIES  
ACCESSORIES  
ACCESSORIES  
ACCESSORIES  
ACCESSORIES  
**ACCESSORIES**  
ACCESSORIES  
ACCESSORIES  
ACCESSORIES  
ACCESSORIES

A set of 3 packing cubes that allows you to be extra organised when packing your bag for your next adventure!

- Available in four colours and 3 sizes: L/M/S  
Dedicated label per size with frontal mesh to allow you to see what's inside
- Lightweight & washable
- Fabric made from recycled PET bottles, part of our Recyclax™ Material Technology Initiative



Black  
1041



Forest  
1338



Navy  
1596






Rose  
1751





146885

**Set of 3 packing cubes**

	14 x 23 x 8
	22 x 23 x 8
	30 x 35 x 10



## LUGGAGE ACCESSORIES

Engineered to make it easier to identify or to secure your luggage.

- Wide assortment of luggage straps and locks with TSA
- Luggage covers for extra suitcase protection
- Identify your luggage with one of our luggage tag



Black  
1041



Midnight Blue  
1549



Red  
1726



Sunflower  
2022



Pale Rose Pink  
5266



121294  
**Key Lock TSA x 2**



122290  
**Combilock 3 Dial TSA Light**



121296  
**Cablelock 3 Dial TSA**



121224  
**Foldable Luggage Cover M**



121223  
**Foldable Luggage Cover L/M**



121220  
**Foldable Luggage Cover XL**



121264  
**Manual Scale**



122291  
**Digital Luggage Scale**



121312  
**Luggage Strap 50 mm**



121307  
**Rectangle Luggage Tag  
x 2**

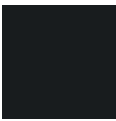


121313  
**Luggage Strap/TSA  
Lock**

PACKING ACCESSORIES

Keep your personal belongings safe with our pouches, belts and passport covers.

- All the items are well organised and functional
- Some items have RFID protection



Black  
1041



Midnight Blue  
1549



Eclipse Grey  
2957



Red\*  
1726



Translucent  
1873



121267  
**Foldable Backpack**



121266  
**Foldable Duffle**



121265  
**Foldable Duffle XL**



121362  
**Bottle Set Pack of 4**



121374

**RFID Money Belt**



121373

**Hanging Toiletry Kit\***

Toilet kit comes with transparent pouch



## COMFORT TRAVELLING

With our Samsonite pillows and eyeshades, we try to maximize your comfort while taking a rest.

- Compression socks for long-haul flights
- Pillows to offer you the right neck support
- Eyeshades for a premium sleep while travelling



Black  
1041



Midnight Blue  
1549



Graphite  
1374



121231  
**Inflatable Pillow**



121234  
**Easy Inflatable Pillow**

Our packaging have the FSC certificate





121240

**Reversible Pillow**

121241

**Memory Foam Pillow**

121244

**Memory Foam Pillow/  
Pouch**

121250

**Eye Mask and Earplugs**

## ELECTRONIC ACCESSORIES

Charge your electric devices through our Samsonite adaptors, that have all needed certifications.

- To charge all your electronic devices
- All items have the needed certifications



Black  
1041



121532

**Worldwide Adapter +  
USB**

**C-LITE TOILET KIT**  
**RESPARK TOILET KIT**  
**STACKD TOILET KIT**

**184**  
**186**  
**188**

TOILET KITS  
TOILET KITS  
TOILET KITS  
TOILET KITS  
TOILET KITS

**TOILET KITS**



# C-LITE TOILET KIT™

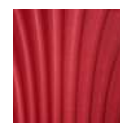
C428

An elegant line of toilet kits to keep your products organised on trips away. Whatever you're packing, put it all into this chic line, the pearly effect of PU will allow you to travel in style.

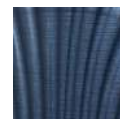
- Feminine look enriched by pearly effect
- Elegant details
- Made of soft PU

## MATCHES

C-LITE P. 14



Chili Red  
1198



Midnight Blue  
1549



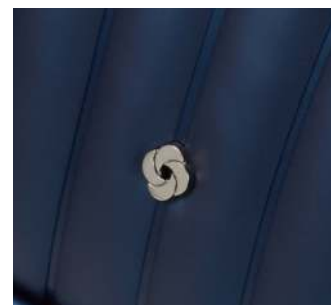
Off White  
1627



Elegant pullers



Samsonite swirl logo



Interior organisation





142674

**Beauty Case**



24 x 16 x 14



142675

**Toilet Pouch**



22 x 15 x 8.5



142676

**Hanging Toilet Kit**



26 x 18 x 15



# RESPARK TOILET KIT™

D008

This toilet kit line is the perfect match with Respark, it stands out for durability and classic design. Even on a business trip or a leisure travel, it allows to keep the toiletries organized.

- Exterior fabric and interior lining made from recycled PET bottles, part of our Recyclex™ Material Technology Initiative
- Shiny nickel details
- Removable inner waterproof pouch

## MATCHES

RESPARK P. 60



Forest Green  
1339



Midnight Blue  
1549



Ozone Black  
7416



Metal pullers



Interior organisation



Samsonite metal plate logo





145864  
**Toilet Pouch**



23 x 12 x 13



145865  
**Hanging Toilet Kit**



25.5 x 11.5 x 18.5



145866  
**Weekender**



26 x 15 x 11



# STACKD TOILET KIT™

C430

Born to be agender, Stackd Toilet kit, with its contemporary design and full interior organisation, will accompany you in every journey, from daily adventures to holidays.

- Agender design enriched by active details
- Made out of 50% RPET Polyester and 50% PU
- Embossed stripes print with Samsonite logo plate



Black  
1041



Navy  
1596



Forest  
1338



Rose  
1751

## MATCHES

STACKD P. 32 AND STACKD BIZ P. 114



### Handy zipper pullers



### PU bottom insert featuring an embossed stripes print



### Detailed interior organisation





142788

**Weekender**



22 x 14 x 9



142789

**Hanging Toilet Kit**



24 x 17 x 10



142787

**Toilet Pouch**



26 x 15 x 11

<b>ALU FIT</b>	<b>192</b>
<b>PRO-DLX 6 SLG</b>	<b>194</b>
<b>FLAGGED SLG</b>	<b>198</b>
<b>VEGGY SLG</b>	<b>200</b>
<b>ATTACK 2 SLG</b>	<b>202</b>





Alu Fit is the innovative solution for storing, carrying and protecting all your cards.

- RFID and NFC protection
- Slim design
- Store up to 6 cards (flat) or up to 4 with embossed types



Black\*  
1041



Blue\*  
1090



Dark Brown\*  
1251



Red  
1726



True Blue  
1875



Aluminium  
1004



Anthracite  
1009



Orange\*  
1641



Climbing Ivy\*  
9199



RFID protection



Premium Leather finishing



Sliding button





Samsonite Alu Fit - Innovative...



LEATHER GOODS

Easy access  
holds up to  
6 cards



133888

**201 -  
SLIDE-UP CASE**



6.4 x 10.2 x 1

RFID 1 € 6/4



133890

**202 -  
SLIDE-UP WALLET**



6.6 x 10.2 x 2.1

RFID 1 € 6/4

# PRO-DLX 6 SLG™

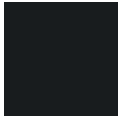
C823

The facelift of our core SLG line maintaining its bold and masculine design and anticipating the design of PRO-DLX 6 Business.

- RFID protection
- Featuring new and trendy models
- New shiny samsonite logo

## MATCHES

PRO-DLX 6 P. 92



Black  
1041



144534

**005 -  
B 8 CC+2 C**



13 x 9.7 x 1

RFID 2 8 6

Enriched with pattern on front



Recessed logo plate with shiny Samsonite logo



Red contrast color





144537  
**047 -  
B 10CC+VFL+C+2C**



13 x 9.6 x 1

RFID 2 10 6



144538  
**015 -  
B 4CC+2C+C**



12.2 x 9.7 x 1.5

RFID 2 4 3



144539  
**046 -  
B 6CC+VFL+2C+C**



10.5 x 8.5 x 1.5

RFID 2 6 2



144540  
**143 -  
W S 8CC+HFL+2C**



8.5 x 11.7 x 1

RFID 2 8 2



144541  
**147 -  
W 15CC+HFL+C+Z+2C**



10.4 x 12.8 x 1

RFID 2 15 4



144543  
**524 -  
Z Round Key Pouch+2R**



11.6 x 7 x 1



144544  
**528 -  
K Ring 2R**



8 x 2 x 1



144545  
**722 -  
8CC H S+2 GUSS ZIP**



8 x 10.8 x 1

RFID 8



144546

**727 -  
All in One Wallet ZIP**



9 x 13 x 1

RFID 12



144547

**732 -  
6CC H S**



7.6 x 10 x 0.5

RFID 6



144548

**048 -  
B 9CC+ZC+C**



10 x 8.8 x 1

RFID 2 9



144549

**049 -  
B S 9CC+VFL+2C+W**



10.5 x 8.8 x 1

RFID 2 9 2

Conceived for a younger consumer, the line is characterized by a color touch on the outside and a coloured lining on the inside adding value to the style and differentiating the line without being too bold.

- RFID protection
- Coloured detail on the outside dedicated colored fabric lining



Black  
1041



Oxford Blue  
1647



139943  
**015 -  
B 4CC+2C+C**



12 x 9.5 x 1.5

RFID 2 4 3



139945  
**001 -  
B S 6CC+2C**



10.5 x 9 x 1

RFID 2 6 2

Debossed logo with coloured detail



Coloured lining



RFID protection





139951

**528 -  
Key Ring 2R**


8 x 2 x 1



140977

**046 -  
B 6CC+VFL+2C+C**


10.5 x 8.5 x 1.5

RFID 2 € 6 2 €



144467

**047 -  
B 10CC+VFL+C+2C**


13 x 9.6 x 1

RFID 2 € 10 6 €



144468

**048 -  
B 9CC+ZC+C**


10 x 8.8 x 1

RFID 1 1 € 9 €



144469

**144 -  
W S 8CC+HFL+C+2C**


9.5 x 10.6 x 1.5

RFID 2 € 8 1 €



144470

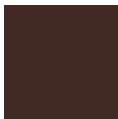
**145 -  
W 14CC+W+2C**


8.9 x 12.6 x 2

RFID 2 € 14 3 €

Veggy is a full vegetable tanned leather line with a small touch of modernity thanks to the two orange stitches on the inside. The perfect combination between simple and sporty design, minimal but modern also thanks to the embossed oblique logo.

- RFID protection
- Sticking in contrast on the inside



Dark Brown  
1251



144476  
**005 -  
B 8 CC+2 C**



13 x 9.7 x 1

RFID 2 8 6



144477  
**047 -  
B 10CC+VFL+C+2C**



13 x 9.6 x 1.5

RFID 2 10 6

Embossed Logo



Contrast details



Vegetal oiled leather line





144478

**015 -  
B 4CC+2C+C**

12.2 x 9.7 x 1.5

RFID 2 4 3



144479

**046 -  
B 6CC+VFL+2C+C**

10.5 x 8.5 x 1.5

RFID 2 6 2



144480

**144 -  
W S 8CC+HFL+C+2C**

9.5 x 10.6 x 2

RFID 2 8 1



144481

**147 -  
W 15CC+HFL+C+Z+2C**

10.4 x 12.8 x 2

RFID 2 15 4



144482

**524 -  
Z Round Key Pouch+2R**

11.6 x 7 x 1.5



144483

**722 -  
8CC H S+ 2 GUSS ZIP**

8 x 10.8 x 1

RFID 2 8



144484

**733 -  
All in One Wallet S**

8.7 x 11.8 x 0.5

RFID 10 2



144485

**049 -  
B S 9CC+VFL+2C+W**

10.5 x 8.8 x 1.5

RFID 2 9 2

**Full Cowhide Small Leather Goods collection with traditional functionality and sporty look.**

- Leather zipper pullers with metal button
- Shiny metal zippers
- RFID protection



Black  
1041



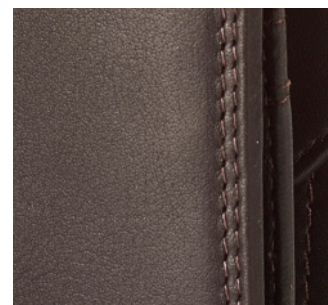
Ebony Brown  
1320



100 % Cowhide leather



Double stitching



Debossed Samsonite logo





127078  
**524-Z Round Key  
Pouch+2R**



11.6 x 7 x 1.5



140976  
**046 - B 6cc+VFL+2C+C**



10.5 x 8.5 x 1.5

RFID 2 6 2 6



144440  
**702 - 8CC H + Z COMP**



9 x 12.4 x 1

RFID 8 4



144442  
**722 - 8CC H S + 2 GUSS  
ZIP**



8 x 10.8 x 1

RFID 8

Full Cowhide Small Leather Goods collection with traditional functionality and sporty look.

- Leather zipper pullers with metal button
- Shiny metal zippers
- RFID protection



144446

**047 - B**  
**10CC+VFL+C+2C**



13 x 9.6 x 1.5

RFID 2 10 6



144447

**144 - W S**  
**8CC+HFL+C+2C**



9.5 x 10.6 x 2

RFID 2 8 1



144448

**146 - W**  
**12CC+HFL+2C+W**



9.6 x 12.5 x 1.5

RFID 2 12 3



144451

**147 - W**  
**15CC+HFL+C+Z+2C**



10.4 x 12.8 x 2

RFID 2 15 4



144453

**049 - B S**  
**9CC+VFL+2C+W**



10.5 x 8.8 x 1.5

RFID 2 9 2



123997  
**005 -  
B 8 CC+2 C**

 13 x 9.7 x 1

 RFID 2  8  6 



135052  
**013 -  
B 11CC+HFL+C+2C+W**

 12.8 x 10 x 2

 RFID 1  2  11  2 



123999  
**015 -  
B 4CC+2C+C**

 12.2 x 9.7 x 1.5

 RFID 2  4  3 



135059  
**502 -  
K Hanger 6 Hooks**

 6 x 13 x 2

 1  2 



135058  
**732 -  
6CC H S**

 7.6 x 10 x 0.5

 1  6 

# OVERVIEW

## CABIN

### HARDSIDE

40 x 55 x 20



**LITE-BOX**  
SP 55



**C-LITE**  
SP 55



**MAGNUM ECO**  
SP 55



**ESSENS**  
SP 55

### HARDSIDE

40 x 55 x 20 (≤ 23)



**LITE-BOX ALU**  
SP 55



**MAJOR-LITE**  
SP 55 EXP



**C-LITE**  
SP 55 EXP



**C-LITE LTD**  
SP 55 EXP



**C-LITE DISNEY**  
SP 55 EXP



**PROXIS**  
SP 55 EXP



**ATTRIX**  
SP 55 EXP



**NEOPOD**  
SP 55 EXP SLIDE OUT  
POUCH



**NUON**  
SP 55 EXP



**UPSCAPE**  
SP 55 EXP



**STACKD**  
SP 55 EXP



**STACKD DISNEY**  
SP 55 EXP MINNIE  
BOW



**STACKD DISNEY**  
SP 55 EXP BLACK  
PANTHER



**STACKD DISNEY**  
SP 55 EXP MARVEL  
COMICS

### HARDSIDE

35 x 55 x 23 (≤ 26)



**PROXIS**  
SP 55 EXP L35



**ATTRIX**  
SP 55 EXP L35

### HARDSIDE

40 x 55 x 23 (≤ 27)



**NEOPOD**  
SP55 EXP EASY ACCESS



**STACKD**  
SP 55 EXP EASY ACCESS

# OVERVIEW

## CABIN

*Selection*

OVERVIEW

### SOFTSIDE

40 x 55 x 20



SPECTROLITE 3.0 TRVL  
SP 55



D'LITE  
SP 55



RESPARK  
SP 55 STRICT



VAYCAY  
SP 55 L40



LITEBEAM  
UPR 55



LITEBEAM  
SP 55



ECODIVER  
DUFFLE/WH 55



PRO-DLX 6  
SP 55 STRICT



PRO-DLX 6  
TRI-FOLD GARMENT  
BAG

### SOFTSIDE

40 x 55 x 23 (≤ 27)



SPECTROLITE 3.0  
TRVL  
UPR 55 EXP



SPECTROLITE 3.0  
TRVL  
SP 55 EXP DF



RESPARK  
UPR 55 EXP



RESPARK  
SP 55 DF EXP



VAYCAY  
SP 55 DF EXP



ECODIVER  
SP DUFFLE 55

### SOFTSIDE

40 x 55 x 22 (≤ 25)



D'LITE  
UPR 55 EXP



D'LITE  
SP 55 EXP



PRO-DLX 6  
UPR 55 EXP



ECODIVER  
DUFFLE/WH55 BP

### SOFTSIDE

35 x 55 x 22 (≤ 25)



RESPARK  
SP 55 EXP L35



VAYCAY  
SP 55 EXP L35



ECODIVER  
DUFFLE/WH 55  
L35 DF

### SOFTSIDE

UNDERSEATERS



RESPARK  
UPR 45 UNDERSEATER



LITEBEAM  
UPR 45 UNDERSEATER

# OVERVIEW

## CABIN

### SOFTSIDE

### OTHERS



**PRO-DLX 6**  
LAPT. BP/WH 17.3"



**PRO-DLX 6**  
ROLLING TOTE 15.6"



**PRO-DLX 6**  
SP TOTE 15.6"



**PRO-DLX 6**  
SP 55 EXP



**SPECTROLITE 3.0**  
ROLLING TOTE 15.6"

### SOFTSIDE

### TRAVEL BACKPACKS



**ECODIVER**  
TRAVEL BACKPACK S



**ECODIVER**  
TRAVEL BACKPACK M

# OVERVIEW

*Selection*

OVERVIEW

## DUFFLES - BEAUTY CASES - TOILET KITS

### SOFTSIDE



ECODIVER  
DUFFLE/WH 67



ECODIVER  
DUFFLE/WH 79



ECODIVER  
SP DUFFLE 79



SECURIPAK  
DUFFLE/WH 55  
L 35CM DF

### DUFFLES ON WHEELS

### SOFTSIDE



RESPARK  
DUFFLE 55  
OVERNIGHTER



RESPARK  
DUFFLE 48  
TWONIGHTER



VAYCAY  
DUFFLE 53



ECODIVER  
DUFFLE S



ECODIVER  
DUFFLE M



ECODIVER  
DUFFLE L

### DUFFLES

### SOFTSIDE



STACKD  
BEAUTY CASE



D'LITE  
BEAUTY CASE



VAYCAY  
TOILET KIT



ECODIVER  
TOILET KIT

### BEAUTY CASES - TOILET KITS

# OVERVIEW

## CABIN

HARDSIDE

40 x 55 x 20



LITE-CUBE DLX  
SP 55



LITE-CUBE  
SP 55



LITE-SHOCK  
SP 55



S'CURE ECO  
SP 55 POST CONSUMER



S'CURE ECO  
SP 55



S'CURE  
SP 55

# OVERVIEW

## CABIN

OVERVIEW

### SOFTSIDE

40 x 55 x 20



**AIREA**  
SP 55 STRICT



**BASE BOOST**  
UPR 55 L40 CM



**BASE BOOST**  
SP 55



**CITYBEAT**  
UPR 55

### SOFTSIDE

40 x 55 x 20 (≤ 23)



**AIREA**  
UPR 55 EXP  
TOP POCKET

### SOFTSIDE

35 x 55 x 20 (≤ 25)



**AIREA**  
SP 55 EXP L35



**CITYBEAT**  
SP 55 L35

# OVERVIEW

## CABIN

### SOFTSIDE

### OTHERS



**ROADER**  
LAPTOP BP/WH 55



**VECTURA EVO**  
ROLLING TOTE 17.3"



**LITEPOINT**  
LAPT. BP/WH 17.3"



**MYSIGHT**  
LAPT. BP/WH 17.3"



**GUARDIT 2.0**  
LAPT. BP/WH 15.6"



**GUARDIT 2.0**  
ROLLING TOTE 17.3"

### SOFTSIDE

### DUFFLES



**MIDTOWN**  
DUFFLE/WH 79



**ROADER**  
DUFFLE XS



**ROADER**  
DUFFLE S



**AIREA**  
DUFFLE 45



**ONGOING**  
DUFFLE

### SOFTSIDE

### DUFFLES ON WHEELS



**MIDTOWN**  
DUFFLE/WH 55 BP



**ROADER**  
DUFFLE/WH 55 L35



**ROADER**  
DUFFLE/WH 68



**ROADER**  
DUFFLE/WH 79

### SOFTSIDE

### TRAVEL BACKPACKS



**ROADER**  
TRAVEL BACKPACK S



**ROADER**  
TRAVEL BACKPACK M

## BEAUTY CASES - TOILET KITS

### SOFTSIDE

### BEAUTY CASES



**C-LITE**  
BEAUTY CASE



**STACKD**  
WEEKENDER



**RESPARK**  
WEEKENDER



**AIREA**  
BEAUTY CASE

### SOFTSIDE

### TOILET KITS



**C-LITE**  
TOILET POUCH



**C-LITE**  
HANGING TOILET KIT



**STACKD**  
HANGING TOILET KIT



**STACKD**  
TOILET POUCH



**RESPARK**  
HANGING TOILET KIT



**RESPARK**  
TOILET POUCH



**AIREA**  
TOILET KIT

# AIRLINE CABIN LUGGAGE

## MAXIMUM EXTERNAL DIMENSIONS and Weight allowed in Economy Class

Samsonite cannot be held responsible if an airline applies other cabin size standards. Always check restrictions with the airline when booking a flight.

	Airline	Max. dimensions	Max. weight		Airline	Max. dimensions	Max. weight
	Aegean Airlines	56 x 45 x 25 cm	8 kg		BMI Regional	55 x 40 x 23 cm	12 kg
	Aer Lingus	55 x 40 x 24 cm	10 kg		British Airways	56 x 45 x 25 cm	23 kg
	Aeroflot	55 x 40 x 25 cm	10 kg		Brussels Airlines	55 x 40 x 23 cm	8 kg
	Aerolineas Argentinas	55 x 35 x 25 cm (max. 115 cm)	Domestic: 8kg International: 10kg		Cathay Pacific	56 x 36 x 23 cm	7 kg
	Aeromexico	55 x 40 x 25 cm (max. 115 cm)	10 kg		Cebu Pacific	56 x 36 x 23 cm	7 kg
	Air Belgium	55 x 35 x 25 cm	10 kg		China Airlines	56 x 36 x 23 cm	7 kg
	Air Canada	55 x 40 x 23 cm			CityJet	47.5 x 35 x 20 cm	12 kg
	Air Caraïbes	55 x 35 x 25 cm +40 x 15 x 30 cm	12 kg		Condor	55 x 40 x 20 cm	8 kg
	Air Europa	55 x 35 x 25 cm (max. 115 cm)	10 kg		Corsair	55 x 40 x 23 cm	12 kg
	Air France	55 x 35 x 25 cm	12 kg		Czech Airlines	55 x 45 x 25 cm	8 kg
	Air India	55 x 35 x 25 cm (max. 115 cm)	8 kg		Delta Airlines	56 x 35 x 23 cm	
	Air NUOVO Zealand	max. 118 cm	7 kg		easy Jet	45 x 36 x 20 cm	15 kg
	Air Transat	51 x 40 x 23 cm	10 kg		EL-AL Israel Airlines	56 x 45 x 25 cm (max. 115 cm)	8 kg
	ITA Airways	55 x 35 x 25 cm	8 kg		Emirates	55 x 38 x 20 cm	7 kg
	All Nippon Airways	55 x 40 x 25 cm (max. 115 cm)	10 kg		Ethiopian Airlines	55 x 40 x 23 cm	7 kg
	American Airlines	56 x 36 x 23 cm			Etihad Airways	56 x 36 x 23 cm	7 kg
	Arkia	55 x 40 x 20 cm	7 kg		Finnair	55 x 40 x 23 cm	8 kg
	Asiana Airlines	55 x 40 x 20 cm (max. 115 cm)	10 kg		Flybe	55 x 40 x 23 cm	10 kg
	Austrian Airlines	55 x 40 x 23 cm	8 kg		EUROWINGS	40 x 30 x 25 cm	8 kg

Last checked: November 2022

	Airline	Max. dimensions	Max. weight
	HOP!	55 x 35 x 25 cm (max. 115 cm)	12 kg
	Iberia	56 x 40 x 25 cm	10 kg
	Israil Airlines	50 x 40 x 20 cm	8 kg
	Japan Airlines	55 x 40 x 25 cm (max. 115 cm)	10 kg
	Jet Airways	55 x 35 x 25 cm (max. 115 cm)	7 kg
	Jet2	56 x 45 x 25 cm	8 kg
	KLM	55 x 35 x 25 cm	12 kg
	Korean Air	55 x 40 x 20 cm	12 kg
	LATAM Airlines	55 x 35 x 25 cm	8 kg
	LOT	55 x 40 x 23 cm	8 kg
	Lufthansa	55 x 40 x 23 cm	8 kg
	Malaysia Airlines	56 x 36 x 23 cm (max. 115 cm)	7 kg
	Norwegian	55 x 40 x 23 cm	10 kg
	Olympic Air	55 x 40 x 23 cm	8 kg
	Philippine Airlines	56 x 36 x 23 cm max. 115 cm	7 kg
	Qantas	56 x 36 x 23 cm (max. 115 cm)	10 kg
	Qatar Airways	50 x 37 x 25 cm	7 kg
	Royal Air Maroc	55 x 40 x 20 cm	10 kg

	Airline	Max. dimensions	Max. weight
	Ryanair	40 x 25 x 20 cm	10 kg
	Scandinavian Airlines	55 x 40 x 23 cm	8 kg
	Singapore Airlines	max. 115 cm	7 kg
	South African Airways	56 x 36 x 23 cm	8 kg
	Swiss International Airlines	55 x 40 x 23 cm	8 kg
	Tap Portugal	55 x 40 x 20 cm	10 kg
	Thai Airways	56 x 45 x 25 cm	7 kg
	Transavia	55 x 35 x 25 cm	10 kg
	TUIfly	55 x 40 x 20 cm	10 kg
	Tunisair	max. 115 cm	8 kg
	Turkish Airlines	55 x 40 x 23 cm	8 kg
	United Airlines	56 x 35 x 22 cm	
	Vietnam Airlines	56 x 36 x 23 cm	10 kg
	Virgin Atlantic	56 x 36 x 23 cm max. 115 cm	10 kg
	Volotea	40 x 30 x 20 cm	10 kg
	Vueling	40 x 30 x 20 cm	10 kg
	Wizz Air	40 x 30 x 20 cm	10 kg

# ICONS

	SIZE (L X H X W)		EASY ACCESS TICKET POCKET		MULTIWAY COMPRESS SYSTEM		TECH LOCKER™ INTERNAL ORGANISATION
	VOLUME		EASY PASS SYSTEM		MUSIC POCKET WITH HEADPHONE GATE		TO GO SIDE POCKET
	WEIGHT		ELASTIC LOOPS		NOTE COMPARTMENT		TRACKING SYSTEM
	ACCESSORY/CABLE POUCH		ERGONOMIC HANDLES		PACKING CUBES		TRANSPARENT PHONE POCKET
	ADAPTABLE LAPTOP COMPARTMENT		ERGONOMIC SHOULDER STRAPS WITH SHOCK ABSORBING SYSTEM		PERSONALISATION OPTION		TSA LOCK 2 COMPARTMENTS
	ADJUSTABLE STERNUM AND WAIST STRAP		ERGONOMIC STRAPS		PERSONALISATION TAG		TWO DIVIDER PADS
	ANTI THEFT SECURITY ZIPPER		EXPANDABLE		POCKET FOR SHOES & LAUNDRY		TUCK AWAY HIPBELT & SHOULDER STRAPS
	ANTI-SLIP SHOULDER STRAP		FIX IT™ FLEXIBLE ORGANISATION		POCKET FOR SUNGLASSES		UNDERWEAR POUCH
	BACKREST WITH AIR CIRCULATION SYSTEM		FLOATING DIVIDER 1		POWER BANK ORGANISATION		USB PORT
	BADGE POCKET		FLOATING DIVIDER 2		QUICK ACCESS POCKET™		VERTICAL LAPTOP ADJUSTMENT SYSTEM
	BATTERY CHARGER		FOLDABLE WHEELS		RAIN COVER		VERTICAL STRAPS
	BAYONET CLOSING		FRONT & BACK POCKET		REFLECTIVE DETAILS		WATER RESISTANT
	BOTTLE HOLDER		FRONT POCKET		REINFORCED BLADE CUT RESISTANT POCKET		WATER RESISTANT LAPTOP COMPARTMENT
	BOTTOM GRIP		GARMENT BAG		REMOVABLE BAG/POCKET		WET POCKET
	BUTTERFLY STRAPS		HANGERS		REMOVABLE LAPTOP COMPARTMENT		WHEEL COVER
	CABIN LUGGAGE		HANGING LOOP/HOOK		REMOVABLE LAPTOP/TABLET SLEEVE		WIDER BOTTOM PROTECTION
	CABLE LOCK WITH TSA FUNCTION		HELMET FASTENING SYSTEM		REMOVABLE LINING		WINDOW
	C-SHAPE COMPARTMENT		HIDDEN EXPANDABILITY		REMOVABLE SHOULDER STRAP		WITH LAPTOP COMPARTMENT
	CHECKPOINT WET POCKET		HIDDEN EXPANDIBILITY ON SUITCASE		REMOVABLE WET POCKET		WITH TABLET COMPARTMENT
	COIN POCKET		HORIZONTAL STRAPS		RFID BLOCKING MATERIAL		ZIP COIN POCKET
	COMBI LOCK WITH TSA FUNCTION		ID TAG		SECURE		ZIPPER PULLER BLOCKER
	COMBI PADLOCK WITH TSA FUNCTION		IN HEIGHT ADJUSTABLE CROSS RIBBONS		SEE-THRU™ MESH POCKET		ZIPPER PULLER LOCKING LOOP
	COMBINATION LOCK		INTEGRATED LUGGAGE SCALE		SHIRT POCKET		ZIPPER PULLER SECURITY HOOK
	COMBINATION PADLOCK		INTEGRATED TOP POCKET		SHOCK ABSORBER SYSTEM		UMBRELLA: ANTI-WIND PROTECTION
	COMPARTMENT		INTEGRATED WHEELS		SUSPENSION / SHOCK ABSORBING WHEELS		UMBRELLA: CANOPY DIAMETER
	COMPRESSIBLE PACKING SOLUTION		INTERNAL ORGANISATION		SLIDE-OUT POUCH		UMBRELLA: LENGTH CLOSED
	COMPRESSION STRAPS		JEWELLERY POUCH		SMART FIT LAPTOP SYSTEM		UMBRELLA: NR OF STAGES
	COSMETIC POCKET		KEY HANGER/KEY FIX SYSTEM		SMART FIX BUCKLE		UMBRELLA: OPENING
	CRADLE POCKETS		KEY LOCK		SMART OPENING		UMBRELLA: WEIGHT
	CREDIT CARD SLOT		KEY PADLOCK WITH TSA FUNCTION		SMART SLEEVE/SMART POCKET WHICH QUICKLY SLIPS OVER THE HANDLE OF AN UPRIGHT OR SPINNER CASE		UMBRELLA: WIND TUNNEL TESTED
	CROSS RIBBONS		M RIBBONS		STAINLESS STEEL WIRE INTEGRATED INTO THE ADJUSTABLE STRAPS		
	DIVIDER PAD		MAGNETIC EARPHONES HOLDER		STERNUM STRAP		
	DOCUMENT HOLDER		MASK POUCH		STURDY WHEELS		
	DOUBLE BOTTLE HOLDER		MIRROR				











**EXPECT A CLEANER PLANET**  
**Samsonite**

**[www.samsonite.com](http://www.samsonite.com)**

SAMSONITE IS A REGISTERED TRADEMARK OF SAMSONITE IP HOLDINGS S.À.R.L. © 2022 SAMSONITE IP HOLDINGS S.À.R.L. ALL RIGHTS RESERVED. 11/2022 - EN